



DIDSBURY MEMORIAL COMPLEX OUTLYING PLAN

November 2016



Didsbury Memorial Complex

Outlying Plan Report

November 15, 2016



Prepared By:

ISL Engineering and Land Services Ltd.



Table of Contents

1.0	Introduction	1
2.0	Project Process	2
2.1	Background Review and Analysis	2
2.2	Opportunity Constraints Review / Programming Framework	4
2.3	Vision for the Memorial Recreational Complex Outlying Plan	4
2.4	Concept Option Development	4
2.5	Draft Outlying Plan Development	5
2.6	Final Outlying Plan Development and Report	5
3.0	Outlying Plan Drawings	7
4.0	Recommendations	23
4.1	Sidewalks and Pathways	23
4.2	Improve Parking	24
4.3	Modify Passenger Drop-off Area	25
4.4	Central Event Plaza Space	25
4.5	Entry Plaza and Patio	26
4.6	Washroom / Storage / Picnic Shelter Building	27
4.7	Skateboard Park	28
4.8	Fitness Equipment	28
4.9	Open Space	29
4.10	Outdoor Skating	29
4.11	Hill Creation	30
4.12	Nature/Adventure Playground	30
4.13	Sand Volleyball Court	31
4.14	Tennis and Pickleball Courts	32
4.15	Japanese Garden	32
4.16	Patio Space near Multipurpose Room	33
4.17	Basketball Court	34
4.18	Furnishings	34
4.19	Safety and security	34
4.20	Crime Prevention Through Environmental Design	35
4.21	Vehicle Access Barriers	35
4.22	Holiday Related Programming	35
4.23	Seasonal Programming	35
4.24	Parking Impact Assessment	35
4.25	Maintenance Placards	35
4.26	Maintenance Resources	35
4.27	Vegetation Establishment	36
4.28	Partnerships	36
4.29	Funding Opportunities	36



5.0 Implementation Plan	37
6.0 Opinion of Capital Costs	38
7.0 Conclusion	39
Appendix A: Existing Site Elements	40
Appendix B: Opportunities and Constraints	42
Appendix C: Programming Framework	44
Appendix D: Concept Options Plans	45
Appendix E: Public / Stakeholder Engagement Results	46





1.0 Introduction

The Didsbury Memorial Complex is Didsbury's central indoor recreation site offering hockey, skating, curling, swimming and an indoor community gathering facilities. Primarily, the facility provides programmed activities, encourages active living, boosts tourism, and provides space for both large athletic events and small gatherings.

Since the park's redevelopment in 1999 for the Alberta summer games, the site has experienced incremental improvements to accommodate new activities and to provide improved amenities. A comprehensive plan has not been created since then.

Considering the age of some of the site's infrastructure, incremental site modifications over the years, and the changes in the demographic of visitors and current needs, the site requires a road map for future improvements and redevelopment. The focus of the outlying plan is the creation of a holistic plan and detailed recommendations to guide redevelopment and site management for the next 10 years.

The plan considers existing uses, modes of access to the ground and ensure that the site generally meets accessibility and safety (CPTED principles) standards. The future park and amenities are designed to improve experiential quality of passive and active recreational spaces.



2.0 Project Process

The Town of Didsbury engaged ISL Engineering and Land Services to work with the town administration to design a plan that demonstrates how the grounds at the Didsbury Memorial Complex can be developed for future recreational purposes.

In order to understand the site and develop the outlying plan, the project progressed through a series of tasks. Public involvement was integrated into the project tasks to confirm the redevelopment plan's direction. The following sections outline the project process.

2.1 Background Review and Analysis

At the beginning of the project, a review of existing background documents and an on-site analysis was conducted to gain an understanding of the history, use, context and physical condition of the site. During this analysis, the following areas were investigated:

- Supporting documents from various levels of government including Active Alberta Policy and Pathways to Wellbeing.
- The relationship between Town planning documents, including the Recreation and Culture Master Plan (2013), and the existing site condition.
- The condition and quality of existing site furnishings and amenities.
- Relationships between the existing facilities, features, amenities and buildings within the site.
- Location and relationship between complementary activities outside of the site (i.e. other recreation facilities, etc.) and activities on the site.
- High-level review of existing site servicing.
- General assessment of accessibility, safety and security principles within the context of existing site conditions.
- Discussions with stakeholders including the 5-0 Club, the Didsbury Minor Ball Association, Sk8park Society (See Appendix E for further information).

A list of existing site elements and their conditions is provided in Appendix A.

Active Alberta Policy (2011)

Our plan accomplishes a number of strategic priorities established in the 2011 Active Alberta Policy. The outlying plan recommends the development of recreational elements, encouraging residents from Didsbury and the surrounding region to be more physically active, more inclusive, more engaged and more connected to nature. We anticipate the implementation of recommendations and subsequent use of the site's amenities will improve quality of life for residents through recreational activity.

Pathways to Wellbeing (2015)

The 2015 National Framework for Recreation in Canada, Pathways to Wellbeing, was endorsed by the Federal Government in 2016. The National Framework provides guidance and sets priorities, to all levels of government, for recreational initiatives. The Outlying plan developed for the Memorial Recreation Complex, builds on the vision for recreation in Canada, by:

- increasing creation capacity;
- providing a place where people can reconnect with nature;
- proving supportive environments through renewing infrastructure and building in multipurpose facilities; and
- providing increasing access to inclusive, active living opportunities.

Recreation and Culture Master Plan (2013) and Mountain View Region Parks and Recreation Master Plan (March 2009)

The Town of Didsbury undertook community engagement to develop a Recreation and Culture Master Plan (2013), which was adopted by Council in 2014. This Master Plan surveyed the community to compile a list of recreational facilities and infrastructure that residents would like to see within the community over the next twenty years. The Recreation and Culture Master Plan (2013) references and builds on the regional perspective on recreation through previously adopted Mountain View Region Parks, Recreation and Culture Master Plan.

The vision for Didsbury's Recreation and Culture Master Plan (2013) is as follows:

"Recreation and cultural facilities in Didsbury will provide residents of all ages with affordable and accessible opportunities to actively participate in the community to enrich their quality of life."

The Didsbury Memorial Complex Outlying Plan, this document, is intended to exemplify how the Recreation and Culture Master Plan (2013) directives would be implemented at the Didsbury Memorial Complex grounds. Specific recommendations related to the Didsbury Memorial Complex include:

- Development of a permanent skate park facility
- Addition of a playground
- Community garden space
- Tennis court relocation - replacement (from the golf course)
- Review the use of existing stage for opportunities to integrate into a multifunctional setting
- Integration of basketball facilities in the park setting
- Connection to the local trail network



Throughout the project, the vision and the recommendation from the Master Plan have been revisited and confirmed with each design decision.

2.2 Opportunity Constraints Review / Programming Framework

Building off the background review and analysis tasks, a list and map of opportunity/constraints was developed, identifying key prospective for changes and limitation within the site (see Appendix B).

Using this information with an understanding of Alberta recreation trends, the project team, including Town administrative staff, developed a list of potential programming suitable for potential inclusion within the site (see Appendix C).

The spatial requirements and functional relationships between both the existing and potential programming elements formed the framework for the subsequent concept option development.

2.3 Vision for the Memorial Recreational Complex Outlying Plan

Through discussion with Town Administration the following vision and goals were confirmed for the park:

Vision: Develop a central, park space that encourages outdoor, four season recreation for all

Goals:

- Encourage 4 seasons use of the park
- Improve a central destination within the community
- Develop multifunctional spaces that meet the needs of the local community
- Develop unique features that create a regional parks and recreation facility
- Enhance existing recreational opportunities by introducing supporting activities for families
- Increase ease of access for people with mobility challenges

2.4 Concept Option Development

Using the programming framework, two concept options were developed for the site. Each concept option provided a similar set of programming elements and in different spatial arrangements (see Appendix D). The plans accommodated four-season activities and provided flexible solutions that allow for a wide range of programmed and un-programmed activities. The plans were illustrated and rendered for subsequent public consultation activities.

Though each concept plan creates a complete vision for the park, the plans were intended to be read together, forming a palette of design elements. It was anticipated that no single plan would be considered the ultimate solution for the park. Instead, the concept plans were used as a tool for the public to review, discuss and indicate preference for different project elements.

An open house was held on June 23, 2016 and participants were able to view the two concept

and interact with the project team. Participants were able to submit feedback through paper surveys at the event or via an online survey, posted from June 27 to July 8, 2016. A total of over 200 surveys were submitted. See Appendix E for the full results.

2.5 Draft Outlying Plan Development

Based on the feedback received from the open house and survey, the project team and Town administrative staff determined a direction for the draft outlying plan. The draft plan fused public preferences with the operational and functional realities of the site. The cohesive plan focused on the layering of activities on the site in order to provide enjoyable recreation experiences for multiple users throughout all four seasons.

The draft plan was presented to Town Council on September 27th, 2016. Council and Town administrative staff provided comments on the draft plan, which required minor alterations. The draft plan was refined into the final plan based on these comments.

2.6 Final Outlying Plan Development and Report

The final Memorial Complex Outlying Plan indicates all changes, upgrades and improvements to the park and support facilities, including infrastructure and additional amenities.

The Memorial Complex Outlying Plan Report, this document, will act as a road map for the redevelopment of the Memorial Complex Grounds. The report is developed with considerable input from Town administration to ensure that the plan is realistic and practical. This Memorial Complex Outlying Plan report is also a fundamental part of communicating the redevelopment plan to Town Council for review and approval.

The recommendation in this report are founded on a detailed cost estimate of capital improvements required to construct the plan. In order to ensure that site development occur effectively and efficiently, the capital improvements are broken down into phases of development based on Town priorities, construction phasing and budgeting.





3.0 Outlying Plan Drawings

List of the Memorial Recreation Complex Plan Drawings:

Drawing 1 - Memorial Recreation Complex Outlying Plan

Drawing 2 - Community Pedestrian Connections Drawing

Drawing 3 - Vehicle Circulation and Parking Plan

Drawing 4 - Landscape Improvement Plan

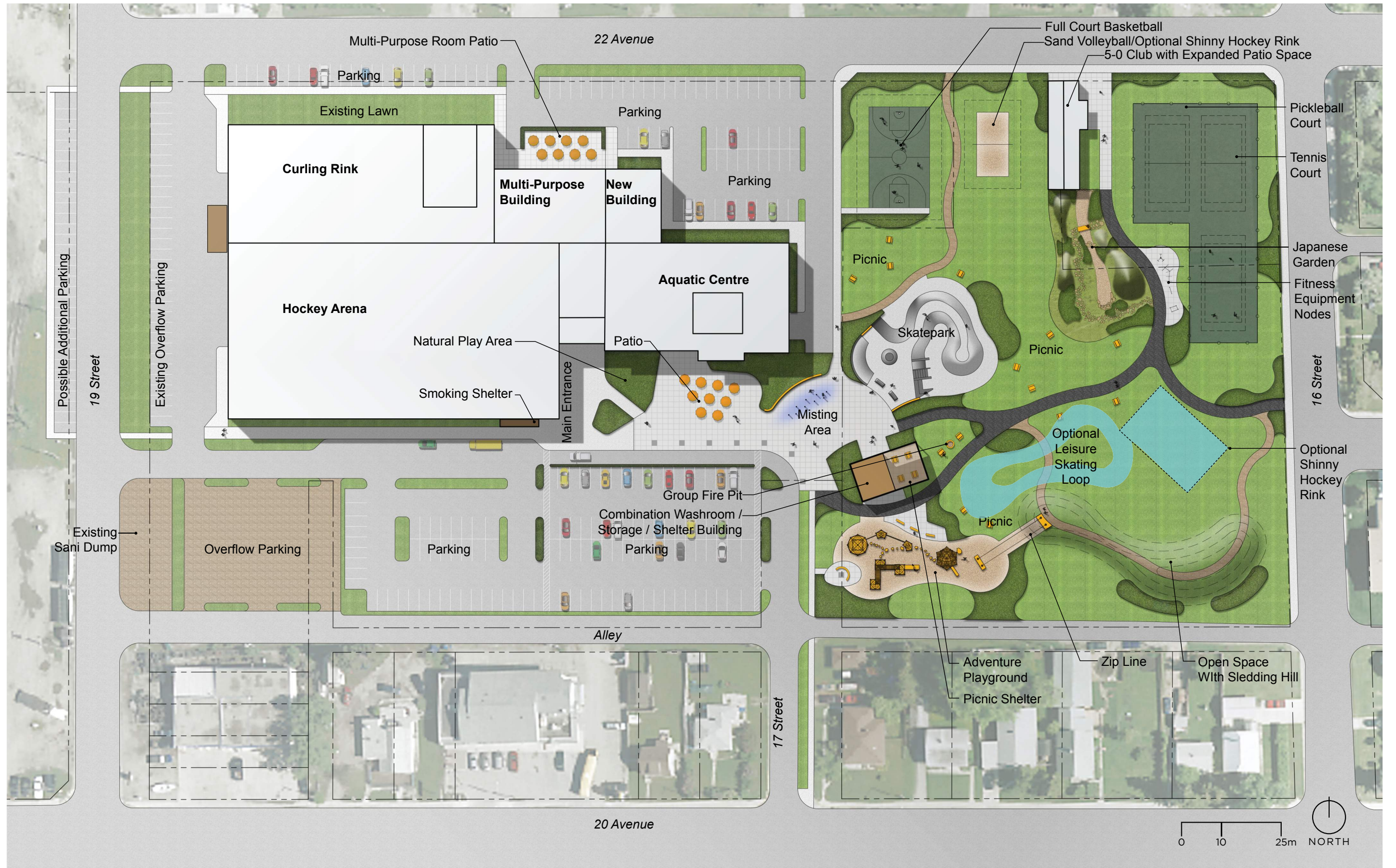
Drawing 5 - Adventure Play Enlargement

Drawing 6 - Event Plaza Enlargement

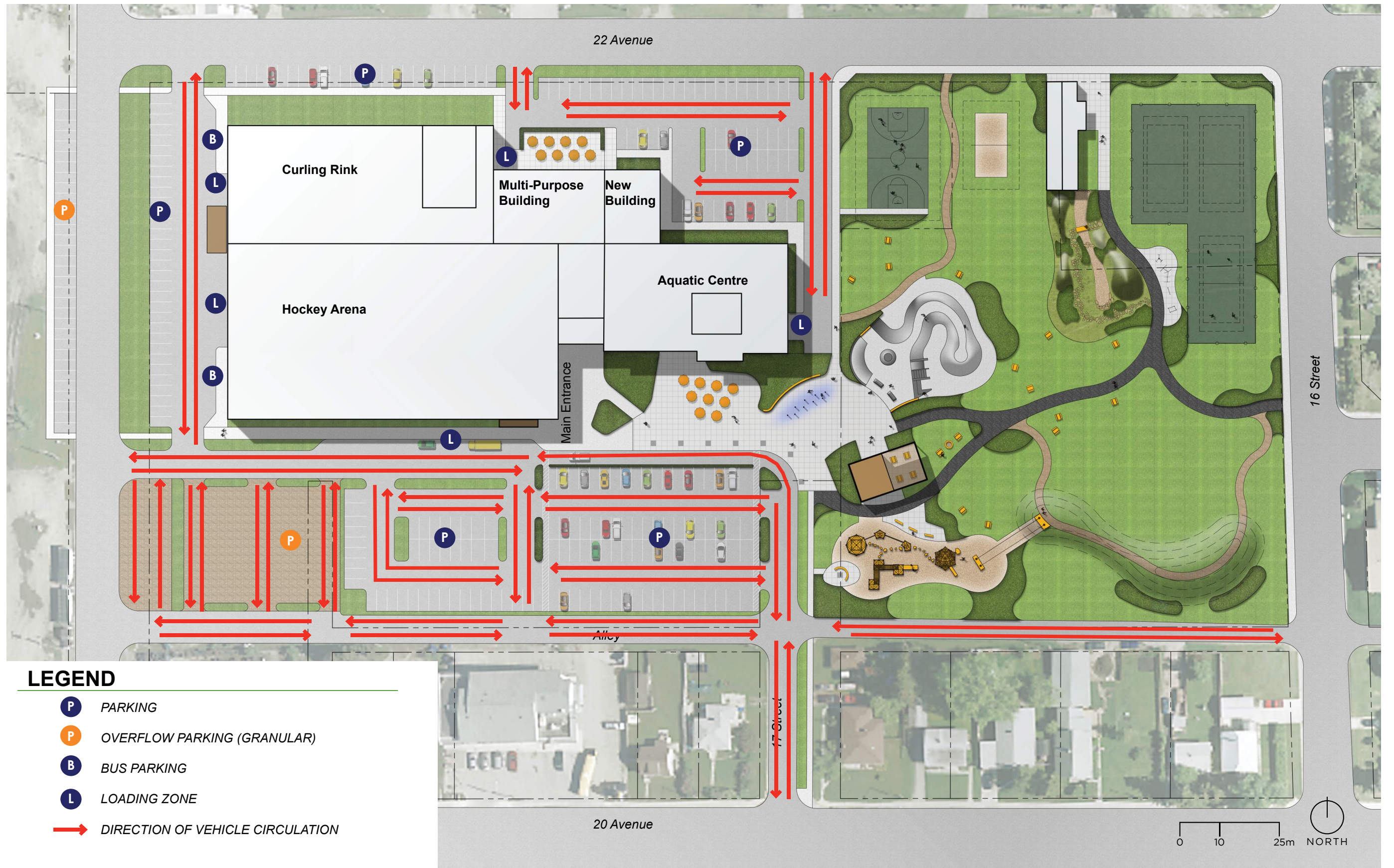
Drawing 7 - Skate Park Enlargement









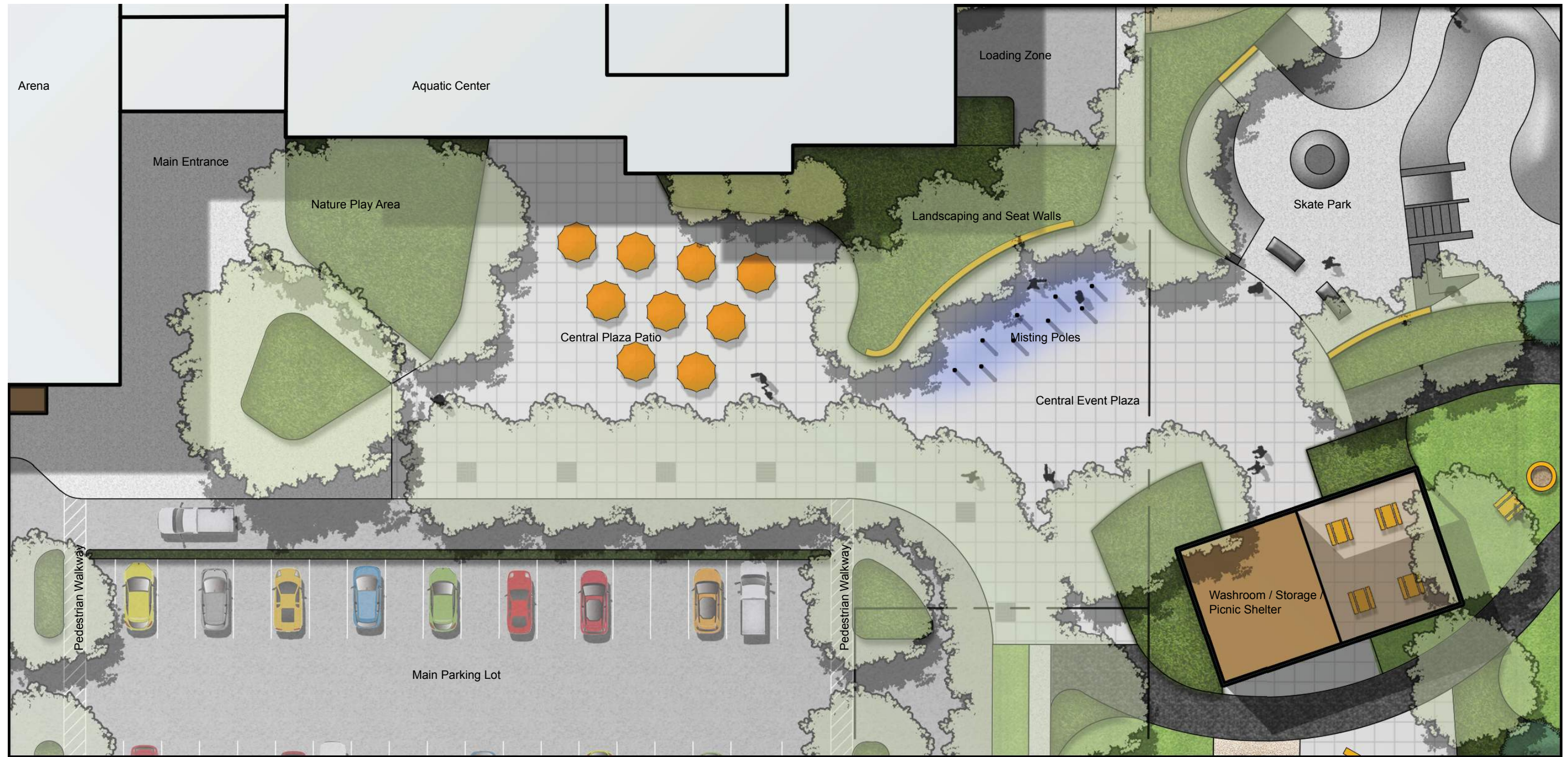


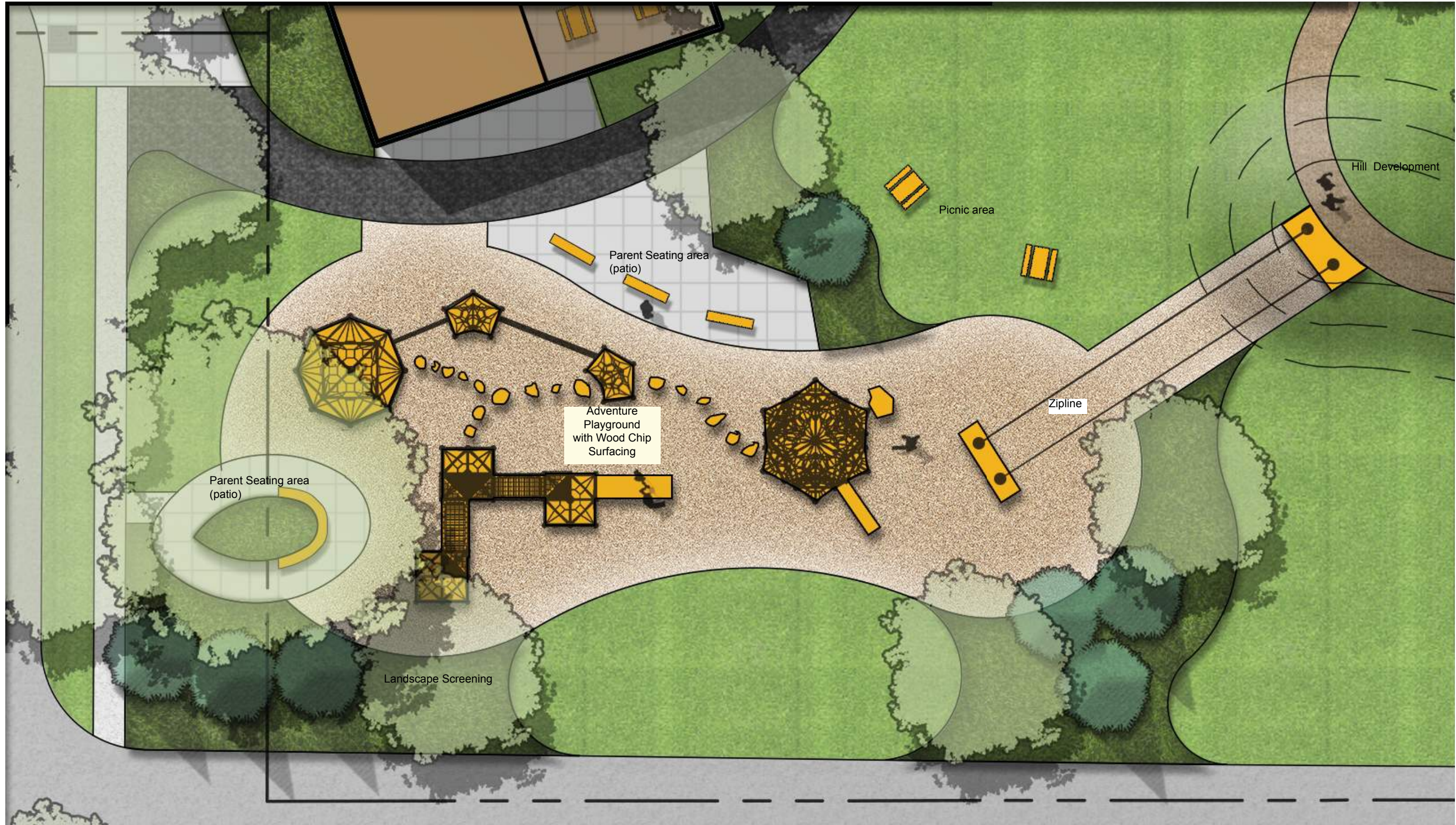
LEGEND

- P PARKING
- P OVERFLOW PARKING (GRANULAR)
- B BUS PARKING
- L LOADING ZONE
- DIRECTION OF VEHICLE CIRCULATION















4.0 Recommendations

The following sections provide descriptions of capital improvement recommendations in Didsbury Memorial Complex Grounds. Please note the following:

- The recommendations are not listed according to priority.
- Trail connections to the surrounding community are important however, are outside of the scope of this project.
- The “level of support”, where applicable, are indicated for each recommendation are from the results of the combined (open house and online) feedback received regarding the concept options in June 2016. (See Appendix E for the full public consultation materials and feedback results.)

4.1 Sidewalks and Pathways

Improve the pathway and sidewalk network within and connecting to the park and ensure that it is efficient and accessible. Include the following recommendations:

- Provide a continuous 3m wide asphalt pathway that runs from the central plaza to the east edge of the site. Connect the asphalt trail to the 5-0 Club building. The asphalt trail is important for providing wheel-friendly access (wheelchair, skateboards, scooters, etc) to the skateboard park and will provide a hard-wearing major trail through the site. Trail should be designed to support the loading requirements of trucks and maintenance equipment.
- Provide sidewalk along the north (22nd avenue) and east (16th street) edges of the site that enhance walking loops on the site and provide connectivity to the surrounding community.
- Provide a tree lined sidewalk connection along the east side of 17 street extending to 20th avenue. This enhancement will create a welcoming gateway for the site for both pedestrians and drivers.
- Provide walkway connections between the civic gathering space and the north edge of the site to provide connections and encourage use of parking surrounding the building.
- Incorporate the design of the walkways with the design of the outdoor gathering plaza. Provide strong walkway connections between the building entrance and the south parking lot.
- Provide small secondary granular trails on-site. Regrade and surface pathways with fine compacted granular material. These trails should be 1m to 1.5m wide depending on the level of use they receive.
- Provide removable bollards in key trail locations where vehicle access needs to be restricted.
- Consider adding a multiuse trail connection on CP lands as part of the future trails master plan, extending, at a minimum, from 20th avenue to the north edge of the site (22nd avenue).



Fig.8: PavedTrail.jpg





- Provide 2-3 rest areas along the pathway system, including benches and waste receptacles (as identified in the 2008 Pathway and Trail Network Master Plan). Consider including dog bag dispensers near waste receptacles.
- Consider the addition of signage including way finding signage to orient visitors to the site, informational signage and provide an opportunity for community posting. Signage is identified in section 4.3 (supplimnetal Pathway Ammenities).



Fig.9: granular trail.jpg

Rationale: Pathways provide the important connections between site features and amenities. They also help direct people, provide handicap accessibility and prevent damage and wear to surface materials. Pathways need to be designed for their appropriate level of use and need to accommodate maintenance and construction equipment, as required.

4.2 Improve Parking

Improve and add additional formalized parking onsite including 204 formalized stalls + approx. 77 overflow stalls + 33 future +/-33 on CP lands. These would replace the existing 164 Formalized stalls + approx. 60 overflow stalls. Stall width would be (5.5m length x 2.8m width). Including the following recommendations:

- Formalize and reorient the South parking lot (118 stalls)
- Formalize North parking lot (86 Stalls)
- Southwest Over flow parking (44 stalls)
- West parking (overflow) 33 stalls on the Memorial Complex Grounds
- Consider an additional future +/-33 stalls on CP lands have been identified, however are contingent on negotiations with CP
- Add parking islands with trees to provide shade during the hot summer months and enhance the appearance to the entrance of the facility.

Current Stalls - Formalized stalls 164 + approx. 60 overflow stalls

(5.5m length x 3m width) there are no pedestrian connections for safe access to the recreation buildings. The current parking breakdown is as follows: Formalized South parking lot (100 stalls); Formalized North parking lot (46 Stalls); Overflow South (60 Stalls); and undefined additional along northern edge.

Rationale: Increased formalization of parking will improve parking efficiency. Reorientation of parking, with walkways, provide improved pedestrian connections. Trees to increase shaded parking during hot summer months and enhance the entrance to the facility.

4.3 Modify Passenger Drop-off Area

Shift the Memorial Complex drop off area (west, just south of the Arena) to increase the public gathering in front of the building.

- Provide soft landscaping to soften and reduce the scale the building, increasing comfort of the facility users.
- Integrate a smoking shelter, that provides an alternative smoking location removed from the main facility doors. The shelter reduces the climactic impacts and encourages use of the designated smoking area.

Rationale: Expansion of the central civic gathering space is a key to providing a flexible, family focused programmable place. Shifting the drop off zone does not increase the distance traveled to the front door, yet will provide a significant improvement in visitor experience.

4.4 Central Event Plaza Space

Create a central gathering space between the aquatic center and the washroom / storage building and group picnic shelter. Including the following recommendations:

- Provide low seat walls with wood surfacing to encourage impromptu gatherings
- Provide shade trees that surround the space to provide summer cooling and an opportunity to animate the space with tree lighting during the winter months.
- Use simple patterns and easy to clean surface materials to create a pedestrian scaled space. Include broom finish concrete, saw cuts, sandblasted concrete with integrally coloured concrete. Materials should provide a surface that is easy to maintain.
- Provide electrical outlets throughout the plaza that will support local events including small vendors and buskers. Provide a central power source capable of supporting music events and a small to medium scale temporary event stage.
- Integrate art into the civic plaza space, adding to the uniqueness of the space. Consider using art to integrate the skate park and central plaza space designs.
- Provide a unique feature like misting towers that provide a unique experience during the summer months. Providing cooling and an element of play on the plaza during the summer heat. Explore options for making misting elements interactive. Misting should be set on a timer and have



Fig.10: Misting Towers.jpg





activators to minimize water waste. Grade the plaza to gather run off from the misting element and guide the water into localized planting beds.

- Consider the effects of misting elements on localized planting beds.
- Consider adding seasonal shade structures to provide shade for people using the plaza area.
- Consider community programming opportunities for the outdoor plaza including outdoor games (i.e. oversized board games, providing chalk, ect...)

Rationale: The current Memorial Complex grounds lacks a civic gathering area capable of holding large scale public events in any of the four seasons. Development of the gathering space will provide a central town square, a location for town celebration, will visually anchor the new washroom and picnic shelter building and provide opportunity for smaller informal gatherings. THis outdoor gathering area provides needed opportunities for outdoor arts and cultural space identified in the March 2009 Mountain View Region Parks, Recreation and Culture Master Plan. This area will be complimentary in use to the adjacent skateboard park, play areas, and washroom building.

4.5 Entry Plaza and Patio

Improve the main entrance to the Didsbury Memorial Complex and develop a central patio area adjacent to the aquatic center. Including the following recommendations:

- Provide movable chairs and tables, a section of the space maybe surrounded by low fencing for indoor outdoor space for the aquatic center.
- Provide soft landscaping to soften and reduce the scale the building, increasing comfort of park users.
- Provide seat walls that provide impromptu seating for large community events.
- Provide landscaping that accents the building but does not block existing signage.
- Provide a small scale tot play area (nature play) area under the existing trees adjacent to the main facility doors. Integrate small scale elements, to provide families with play opportunities, during events inside the recreation facility. Play elements should be visible from the front facility doors and the adjacent patio area to the east.
- Consider if building signage requires relocation to help with way finding or visibility to key users.
- Consider providing a localized WIFI hotspot for the central patio space
- Provide a smoking shelter in the alternative location noted on the plans to relocate the smoking area away from the front doors. Consider using enforcement measures to ensure smoking does not affect facility users.
- Patio surfacing should blend and compliment the central event plaza space to the east.

Rationale: Enhancement of the entrance to the Memorial Complex will provide improved visitor experience and provide improved waiting areas along the front of the building. This space will also offer expanded multifunctional space for use during town events.

4.6 Washroom / Storage / Picnic Shelter Building

Create a washroom / storage / picnic shelter building (approx. 335sq.m. / 3600sq.ft) that supports four season park activities. Including the following recommendations:

- Design the building as a four-season facility with
- Design the building as a four-season facility with spaces that provide programming flexibility. Consult local stakeholders when developing the building program and design.
- The size of the building requires confirmation based on the program determined for the facility. The building footprint on the redevelopment plan is an approximation only.
- Provide four season public washroom facilities with flush toilets and running water.
- Provide an adjoining picnic shelter, with upto 6 picnic tables inside the shelter and 1 barbeque adjacent to the building.
- Provide storage rooms for building maintenance. Consider the potential to accommodate other storage needs, such as park or rink maintenance equipment.
- Consider adding heating elements (radian heaters or fireplace to the inside of the group picnic shelter so that it can be used as a winter warm- up area.
- Provide a drinking water fountain with water bottle fill capabilities and an outdoor drinking water tap. Provide signage to indicate that the water is potable.
- Integrate the building design with the design of the adjacent gathering plaza
- Consider adding a group fireplace or firepit that could be used during winter months or special events. Fireplace or firepit should be designed in a manner that prevents people from using it outside of “official” hours of operation. Consider using a natural gas serviced fireplace or firepit.



Fig.11: Washroom Storage Picnic Shelter.jpg

Rationale: A washroom / storage / shelter building will provide space and amenities for all season use (i.e. sports events, winter skate warm-up, etc). This facility will require sewer water and electrical servicing. Consider the use of natural gas for heating the building.



4.7 Skateboard Park

Replace the existing temporary skateboard park with a permanent skateboard park facility (approx 850m. sq.). Include the following recommendations:

- Work with the local skateboarding community and skateboard park experts to design the facility according to users' needs and desires. Try to accommodate existing features that are currently popular with users.
- Consider the possibility of incorporating winter snowboard terrain features, if they are compatible with the skateboard park design.
- Design the facility for a wide range of age groups and skills levels in the design.
- Design the facility for non-skateboards uses, such as scooters, and mitigate potential conflicts.
- Consider providing lighting within the skateboard park. Ensure that the lighting design mitigates light pollution and light trespass issues.



Fig.14: Snake and Bowl.JPG



Fig.13: Street Style Park.jpg

Rationale: The existing skateboard park was temporary. The existing skateboard park is used but has issues with because the elements aren't permanent and are installed on asphalt.

4.8 Fitness Equipment

Relocate existing fitness elements located in a group along the park trail system. Include the following recommendations:

- Locate fitness element in areas that are visible from trail, yet still provide a sense of privacy from heavily used areas.
- Locate fitness elements in areas with shade and protection from wind.
- Provide a durable and safe fall area around the fitness elements. Consider reusing the pea gravel being removed from the existing play areas.
- Reuse existing equipment completing repairs prior to reinstallation.

Rationale: Outdoor fitness elements are a growing recreation trend. A circuit of low key fitness elements will allow runners, walkers and cyclists the opportunity to incorporate strength training into their outdoor fitness routines.

4.9 Open Space

Create new unprogrammed open space and picnic areas throughout the park including within the former location of the ball diamond. Include the following recommendations:

- Provide approximately 3 groups of picnic sites (2 picnic tables, 1 garbage receptacle and 1 recycling receptacle per grouping) around the perimeter of the open space
- Provide 7 additional tables located throughout the remainder of the open space to provide seating related to various recreation activities throughout the site.
- Provide a variety of sizes of open space to accommodate multiple opportunities for recreation and spontaneous play.



Fig.15: Openspace and Picnic Area.jpg

Rationale: New picnic areas are provided adjacent to unprogrammed open lawn areas that can be used for informal activities, such as frisbee and catch. These picnic areas are complimentary to the other recreational amenities proposed for the site, providing support gathering areas.

4.10 Outdoor Skating (Optional)

Create a seasonal outdoor hockey/leisure skating rink that is flooded during the winter and left as an open multiuse lawn space in the other seasons. Include the following recommendations:

- Consider adding temporary boards to the rink to improve hockey/shinny player experience and prevent pucks from leaving the ice. The boards will be removed and stored at the maintenance compound outside of the skating season.
- Ensure that adequate water servicing is provided close to rink area. Consider the possibility of hot water servicing to improve ice quality.
- Consider adding a rink maintenance equipment storage room in the design of the washroom storage building. Alternatively, consider a standalone water service /rink flooding system.
- Provide landscape screening along the southwest side of the skating area to reduce the impact of winter winds.
- Consider the future possibility of providing



Fig.16: leisure skating track



a seasonal rink over the sand volleyball court.

Rationale: The Town of Didsbury should promote being an outdoor winter destination by development of winter recreation activities and maximizing the all-year use of its open spaces. The addition of outdoor skating increases outdoor winter recreation opportunities identified as deficient in the March 2009 Mountain View Region Parks, Recreation and Culture Master Plan.

4.11 Hill Creation

Create a hill within the Memorial Complex Grounds that could be used for sledding/ tobogganing in winter and summer adventure play and spectating. Include the following recommendations:

- Coordinate the import of fill materials from local construction excavation projects.
- Orient the hill to the northeast or east to help maintain snow cover by protecting it from sun and wind exposure.
- Ensure that the hill height, slope and run-out space is properly designed to safely accommodate sledding/ tobogganing requirements. Use "Check Out the Hill - Sled Safety" created by Safe Kids, Children's Health Centre of Northern Alberta, 1996 (<http://lin.ca/sites/default/files/attachments/Check%20out%20the%20HillSled%20Safety.pdf>) for design guidelines.



Fig.17: Sledding.jpg

Rationale: The Town of Didsbury is committed to promoting the development of winter recreation activities. The addition of a sledding/tobogganing hill will bring a new winter activity to the Memorial Complex Grounds. Sledding and tobogganing is a winter activity to the seasonal outdoor rink and will help anchor the area as a winter activity destination. Construction of this hill also provides the opportunity for the Memorial Complex construction and other local excavation projects to find a location for excess fill.

4.12 Nature/Adventure Playground

Replace and expand existing playground with a nature / adventure play area (approx. 630sq.m.) for a wider range of age groups. Include the following recommendations:



Fig.18: Log Jam.jpg



Fig.19: Jr.AdventurePlay.JPG



Fig.20: Adventure Play.JPG

- Play elements should be unique providing a graduated play value for different ages. Elements should provide a sense of adventure.
- Areas of the playground should provide the opportunities for creative play and quiet socialization.
- Current designs include the following elements – a double zipline, a log jam,
- Design the playground using timber and natural material play elements that form circuits and minimize dead ending elements. Construct the facility using high-quality, low-maintenance natural materials where possible.
- Additional public consultation should be conducted for the design of the play area prior to construction. During consultation, determine an acceptable age range for the facility.
- Consider the addition of some traditional play elements if requested by the public.
- Consider using engineered wood mulch, with subdrains, as play surfacing material since it is wheelchair accessible, has a natural aesthetic and is cleaner than the existing pea gravel. Standard wood mulch should not be used.
- Provide split rail fencing and planting between the play area and the adjacent park uses.
- Provide seating areas for parents with concrete surfacing, that have both trees for shade and exposure to the winter sun.

Rationale: This play area will replace the existing play equipment that is nearing the end of its lifespan. By keeping the play area near its existing location, it is visible from the main entrance. By expanding the size of the playground, it will contain a greater variety of play elements for a wider range of ages. Nature / adventure play is a growing recreation trend and is well documented for enhancing childhood development. Removal and redevelopment of the playground space will meet the goals of inclusive play identified in the Active Alberta Policy and Pathways to Well being framework.

4.13 Sand Volleyball Court

Develop a sand volleyball court. Including the following recommendations:

- Provide a single court with a removable net and permanent posts.
- Contain sand with concrete curbing surrounding the court
- Consider drainage requirements to allow for the area to be used in winter for an recreational ice surface



Fig.21: SouthRec_Athletic-Equip-04.jpg

Rationale: Sand Volleyball offers an alternative sporting option that is not currently present in the Didsbury area.



4.14 Tennis and Pickleball Courts

Replace Existing lawn bowling with tennis and pickle ball courts. Including the following recommendations:

- Provide four pickle ball courts with immediate access to the 5-0 Club.
- Provide two tennis courts
- Provide fencing to surround the courts and dividers between the ends of the courts
- Provide some landscape screening between the courts and the adjacent residential properties to reduce the perceived impact through the change in use of the area.
- Consider using high quality surfacing for all courts to minimize short term maintenance requirements (i.e. line repainting)
- Consider permitting improvements to the 5-0 building, in consultation with the 5-0 Club allowing for access during tennis or pickle ball events.



Fig.22: Pickle Ball

Rationale: The existing tennis facilities in town are in poor repair. The 2013 Recreation and Culture Master Plan recommend providing courts at a centralized location for the town. Interest in the development of court activities including pickle balls and tennis were identified during the open house.

Locally, interest in lawn bowling has declined in popularity over the last few decades and we do not anticipate it will increase significantly in use without a significant programming effort from the Town. The current lawn bowling facility is in poor condition and will take significant capital funding to repair the existing facilities. Reallocation of the lawn bowling area to a racket sports area is recommended.

4.15 Japanese Garden

Modify existing planting area south of the 5-0 Club to develop a Japanese garden

Including the following recommendations:

- Add a unique Japanese gateway as an entrance to the park space
- Provide a small recirculating water feature to add the sound of water and white noise to the space.
- Preserve existing mature plantings, integrate additional plantings to strategically screen the surrounding park uses. Provide plantings that are complimentary to Japanese style of gardens.
- Strategically use ornamental fencing where vegetation will not adequately screen the the surrounding park uses.

- Provide solitary and group seating areas throughout the space.
- Provide walking surfaces that are complimentary to Japanese style of gardens, ensure that at least one of the pathways is fully accessible.
- Consider using low level ground lighting to add ambience, extend useable hours in all four seasons, and increase the sense of safety.

Rationale: The Japanese Garden recognizes Didsbury's relationship to its sister town in Japan, Miki Town. This space will provide a unique, alternative experience within the Memorial Complex Grounds, offering a quiet escape. It allows for quiet socializing, with surrounding recreation activities buffered by plantings and masked by the sound of trickling water.



Fig.23: Japanese Style Gate



Fig.24: Japanese Garden Example

4.16 Patio Space near Multipurpose Room

Provide an outdoor patio space for the Multipurpose room

- Provide movable chairs and tables, a section of the space maybe surrounded by low fencing for to further define the multipurpose room's outdoor space.
- Provide soft landscaping to soften and reduce the scale the building, increasing comfort of park users.

Rationale: Adding outdoor patio increases available space and programming opportunities for the users of the multipurpose room adding value to the rental space.



4.17 Basketball Court

Develop a central municipal basketball court. Including the following recommendations:

- Provide fencing that surrounds the court
- Provide 6 free standing basketball hoops, allowing for full court play or two half court games.
- Provide some landscape screening between the courts and the adjacent residential properties to reduce the perceived impact through the change in use of the area.



Fig.25: Basketball Court

Rationale: Interest in centralizing basketball courts to the Memorial Complex grounds were confirmed identified during the open house, due to deteriorating conditions at the school grounds basketball court.

4.18 Furnishings

Create a comprehensive furnishings plan that relocates and upgrades picnic sites, barbeques, benches, bike racks, garbage receptacles, recycling receptacles and dumpsters. Include the following recommendations:

- Select a consistent high-quality handicap picnic table that is well designed for its purpose while being aesthetically similar to non-handicap picnic tables.
- Review all existing benches for improvements. Since many of the site amenities have been modified or expanded, not all of the existing benches are in appropriate locations. Select a consistent high quality bench to be used throughout the site. Place them in convenient locations near amenity buildings and major site amenities.
- Select a consistent high-quality bike rack to be used throughout the site. Place them in convenient locations at all public buildings and major site amenities that are near trails.
- Add garbage receptacles and recycling receptacles at all buildings, major site amenities and near groups of picnic sites. Ensure that the receptacles are designed to be wildlife proof and have sufficient capacity.

Rationale: Furnishings are an important part of user experience and site cleanliness. They need to be appropriately located in order to be effective and well used. Consistently designed, high-quality furnishings will improve aesthetics, and reduce maintenance.

4.19 Safety and security

Work with the RCMP and bylaw enforcement to create strategies and protocols to minimize issues with non-sanctioned activities in the park. Work with the RCMP to provide positive interactions

on the Memorial Complex Grounds, by including education on emergency services at civic events. Discuss potential issues with the adjacent housing and businesses to proactively work towards effective solutions.

4.20 Crime Prevention Through Environmental Design

Consider Crime Prevention Through Environmental Design (CPTED) principles in the design of new spaces and improvement of existing spaces.

4.21 Vehicle Access Barriers

Review and improve vehicle access barriers (i.e. bollards, boulders, gates) as required to ensure that vehicles are not permitted to enter restricted park areas.

4.22 Holiday Related Programming

Consider adding holiday related, staffed recreational programming activities in the Memorial Complex Grounds. Some of these programs could include the Canada Day Celebration, a winter carnival, that helps to create special community gatherings for the community and increases regional recreation draw to the surrounding communities.

4.23 Seasonal Programming

Consider adding seasonal or occasional staffed recreational programming activities in the Memorial Complex Grounds. Some of these programs could include outdoor fitness, life-sized games, or stewardship education.

4.24 Parking Impact Assessment

Undertake a parking impact assessment that will determine the current parking needs and capacity and anticipate future parking needs based on proposed site improvements. Use this information to help further prioritize parking improvements on-site and determine if added overflow parking is required.

4.25 Maintenance Placards

Small placards with Town contact information and emergency information should be installed on all major amenities (washrooms, shelters, buildings, play areas, skateboard park, etc.) and at wayfinding maps to allow park users to report damage, maintenance needs or enforcement problems. Reported problems should be addressed immediately.

4.26 Maintenance Resources

Regular maintenance of the park and amenities will require dedicated resources to ensure that the amenities are maintained to a satisfactory standard. Inspections, repairs and maintenance should occur as follows:

- Signage should be monitored seasonally to ensure that all signs remain in place and



consistent. Damaged, missing or misplaced signs should be corrected and/or replaced immediately. Park information kiosks should be reviewed and updated to ensure that information material remains relevant.

- Furnishings, such as garbage and recycling receptacles, benches, and barbecues, should be thoroughly inspected and repaired or replaced, as required.
- Review mature trees in Memorial Complex Grounds for signs of decline and identify trees that are nearing their end of lifespan. Additional trees should be planted near declining trees to help successional planting efforts.
- Prune large dead branches and cut down dead or dying trees that may cause safety hazards for park users.
- Setup and removal of temporary skating rink boards. Initial snow compaction and flooding required to build up rink surface
- Seasonal opening and closing (blow-out) of outdoor drinking taps, fountains and seasonal water lines

4.27 Vegetation Establishment

Following the contract landscape work (tree planting and vegetation planting), town staff will be required to continue plant establishment maintenance (watering, fertilizing, weed control) for up to five years. “Green” landscaping methods, such as limiting the use of chemicals, should be required wherever possible.

4.28 Partnerships

Partnerships should be considered as an important resource for the ongoing management component of the Memorial Complex Grounds. Volunteers from specific user groups such as the skateboard committee, the 5-0 Club, sports, walking groups, or an overall “Friends of the Memorial Complex Grounds” group could serve as a valuable resource for identifying, coordinating and completing specific aspects of park maintenance. Through a partnership arrangement, the Town could provide liaison, equipment and budget resources to support the work of groups. Where the Town is interested in having a designated volunteer group to assist with management of Memorial Complex Grounds, a terms of reference would need to be developed to define the structure, role, authority and reporting relationship of the partnership.

4.29 Funding Opportunities

Investigate grant funding options for the enhancement of the Memorial Complex Grounds enhancement phases. Some opportunities include:

- Canada Post Community Foundation Grant: <https://www.canadapost.ca/web/en/pages/aboutus/communityfoundation/default.page>
- Alberta Recycling Grant (up to \$30,000): <http://www.albertarecycling.ca/tire-recycling-program/community-development>
- Review Building Canada – Recreation Funding opportunities <http://www.infrastructure.gc.ca/prog/bcf-fcc-categ-details-eng.html#comm6>
- Community Initiatives Program (upto \$75,000): <http://www.culture.alberta.ca/community/community-grants/community-initiatives-program/default.aspx>

5.0 Implementation Plan

Based on consultation with the Town’s project team, it is recommended that Didbury’s Memorial Complex Grounds Outlying Plan be implemented through multiple phases over the next five to 7 years, contingent on available funding. The first phase is recommended to be completed within the next year (2017) Phase II is recommended to be completed by fall of 2018. The remaining improvements are to be completed within 4 to 5 years. Final phasing and funding priorities will be further evaluated throughout the implementation of the plan. Final implementation order of the project elements are subject to change based on council and administration priorities. Implementation of capital cost elements of this plan are subject to council approval and funding availability.

The current recommend implementation strategy is as follows:

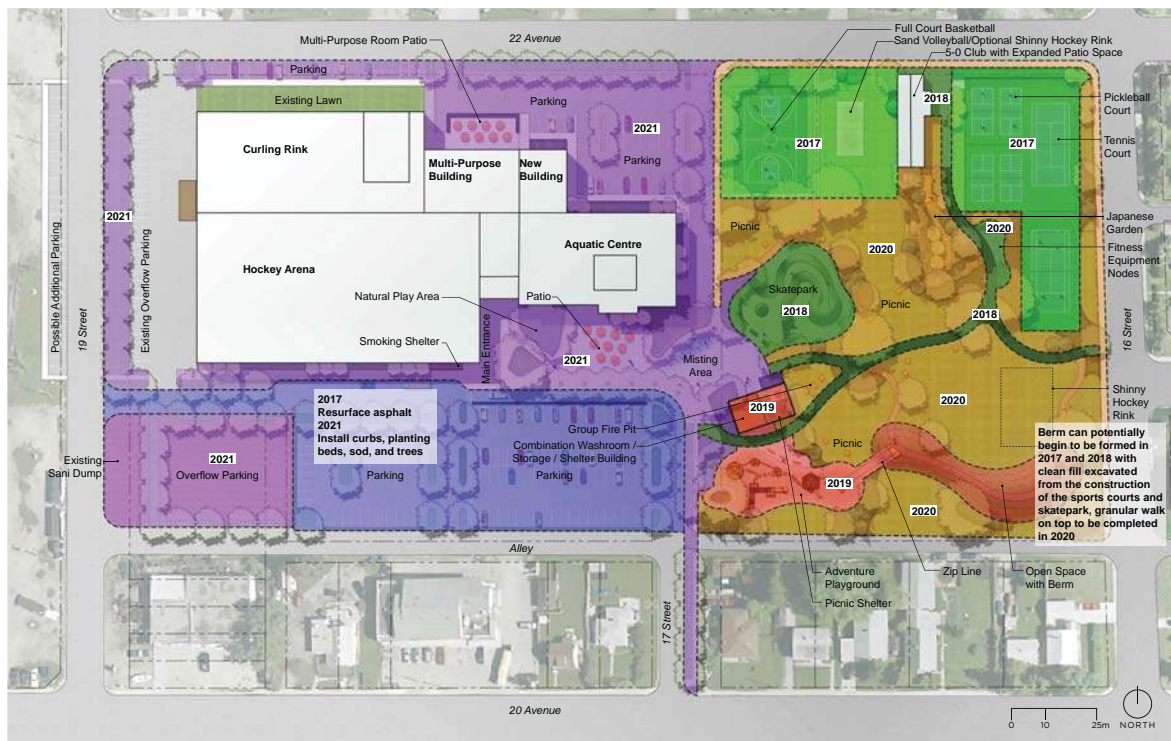
2017 – sports courts implementation – Basketball, volleyball, Pickle Ball and Tennis court installation; parking lot asphalt resurfacing (Light Green)

2018 – Skate Park and trails implementation (Dark Green)

2019 – Playground, hill, washroom/picnic shelter and 5-0 Club landscape improvements (Orange)

2020 – open space development and landscaping, fitness equipment and Japanese garden improvements (Yellow)

2021 – plaza and parking lot improvements, parking lot landscaping (purple)



6.0 Opinion of Capital Costs

This budget has been developed in order to give an approximate value of the direct construction costs for this project. Although the budget is based upon realistic values that we foresee to be true, there is no guarantee that this is an absolute representation of what the final project costs will be.

The following provides order-of-magnitude opinion of costs that is broken down per year of the implementation plan. The order-of-magnitude costs provide a current dollar value required to implement the Outlying Plan. All pricing is based on a relation of previous project values (historical data) and current market conditions.

Design Fees

Further design development of each project phase will further refine the scope of work, reduce uncertainty and unforeseen conditions and refine the capital costing and while reducing the recommended contingency. Typical Design and construction administration fees for a project of this magnitude are in the order of 10% of the overall construction budget, including a small amount of public communication.

Contingency

The contingency for this project will cover the unforeseeable work and non-scope work that may be included in the final product. This additional percentage will cover some risks that can be associated with the outlying plan drawings that do not include detailed research into the site conditions, building systems, current walk and curb conditions, etc.

A contingency allowance of 20% has been added to the estimate to show an approximate value of the missing detail in the current level of design and unforeseen site conditions that may be encountered.

Escalation

Costs within this budget have no additional allowance for escalation. The estimate is based on 2016 figures.



Opinion of Probable Cost

2017 Construction	\$ 769,950
Sports Courts (Tennis, Pickle Ball, Volley Ball and Basketball); and Parking Lot Resurfacing	
2018 Construction	\$ 559,650
Skate Park; and Pathways Construction	
2019 Construction	\$ 963,750
Playgrounds; Hill Development; Washroom/Picnic Shelter; and 5-0 Club Walkway Improvements	
2020 Construction	\$ 683,900
Fitness Equipment Relocation; Open Space Development and Landscaping; and Japanese Garden Development	
2021 Construction	\$ 1,690,100
Central Event Plaza; Entry Plaza; Parking Lot Improvements and Landscaping	
Memorial Complex Enhancements (All Areas) Total	\$ 4,667,350
10% Design Fees	\$ 466,735
20% Contingency	\$ 933,470
Grand Total	\$ 5,134,085



7.0 Conclusion

The Memorial Complex Grounds Outlying Plan defines an overall road map for the implementation of improvements for the park space that surround Didsbury's Memorial Complex. It recognizes the opportunity to create a unique and important four season place for community gathering with a regional draw for recreation that compliments the existing indoor facilities.

The Memorial Complex Grounds Outlying Plan has been designed as a balanced strategy for understanding the park's important central location within the town and understanding of the potential regional draw, while providing managed access for the recreation and enjoyment of individuals, families and groups. The Outlying Plan has been designed with careful consideration of the needs and desires of current users and the opportunities that exist for meeting the needs of a growing population and changing demographic in Didsbury and its surrounding area.



Appendix A: Existing Site Elements

The following provides a list of elements on-site and their condition:

Buildings

- Memorial recreation Complex building, including an aquatic centre, arena, multipurpose room and curling centre.
- 5-0 Club Building

Playgrounds and Fitness Areas

- One large multi-age traditional wood play equipment, including swings, two play structures and pea gravel surface. The playground is reaching the end of its expected service life.
- One area with four pieces of outdoor adult fitness equipment on an asphalt pad.

Sports Fields and Courts

- One baseball diamond (foul lines approximately 83m) with shale infields, turf outfields, concrete dugouts, bleachers and enclosing, low chain-link fence. Elements of the facility are in poor to fair condition.
- A lawn bowling green and enclosing fencing. The facility is in poor condition significant effort is required to make the green functional.

Skateboard Park

- Temporary skateboard park on asphalt surface. Elements of the facility are in poor to fair condition and reaching the end of their service life. Recent repairs to the facility have reduced safety concerns.

Recreational Amenities

- Limited number of benches and seating areas throughout the site.
- Limited number of trash receptacles throughout the site.

Parking and Access

- Asphalt main parking lot near main entrance to the Complex building (south) with asphalt access roads
- Gravel overflow parking lot west of the main parking lot
- Asphalt parking lot near curling rink (north)
- Perpendicular parking stalls off of 22 Avenue
- Parallel parking along 19th Street

Trails and Pedestrian Access

- There are no trails on site, only sidewalks providing access to the buildings.
- Limited pedestrian connectivity to destinations outside of the site.

Landscaping

- Large portion of the site is manicured turf.



- Mature shade trees throughout the central area of the site.
- Some relatively large gravel areas of the site.

Maintenance Areas

- Maintenance accesses into the Complex in several separate locations. Some of these have vehicle access routes (gravel)
- Multiple separate dumpsters are located near building maintenance accesses
- Arena Zamboni access and snow dump area is located on the west side of the arena
- A sani-dump and water fill station is located just outside of the southwest side of the property line





Appendix B: Opportunities and Constraints

Information gathered during the site review phase (see Section X) and discussion with Town staff was used to develop an understanding of site opportunities and constraints for concept planning.

A map of site opportunities and constraints is provided in Figure xxx on the Page xxx. The following outlines the opportunities and constraints for the project:

Buildings

- The Memorial Recreation Complex and 5-0 Club building functions and amenities to remain as existing
- Potential to add a building addition to house Town community services, such as Neighborhood Place

Playgrounds and Fitness Areas

- Potential to upgrade all equipment as most of the elements are near end of lifespan.
- Potential to re-evaluate age range of children using the equipment.
- Potential for non-structured play equipment (i.e. nature/adventure play).
- Potential to remove the swing set since there is only one toddler swing.
- Potential to remove or relocate some of the sharp boulders in play areas.
- Potential to replace boulders with different kind to reduce safety hazards.

Sport Fields and Courts

- Potential to remove existing baseball diamond and use space for different recreational functions.
- Potential to develop tennis and/or pickle ball to replace the existing lawn bowling greens.
- Potential to add line work and net modifications to accommodate pickleball.
- Potential to add basketball courts
- Potential to add beach volleyball courts

Skateboard Park

- Potential to make facility permanent with durable equipment.
- Potential to move skateboard park to different location on-site.

Recreational Amenities

- Potential to add additional picnic sites in existing open spaces.
- Potential to provide handicap accessible picnic tables and barbecues

- Potential to improve gravel pads under tables and barbeques
- Potential to add or relocate garbages /recycling receptacles in more appropriate locations.
- Potential to replace/add bike racks in appropriate locations.
- Potential to accommodate the annual bonfire with in the park

Parking Lots and Access

- Potential to adjust the main parking lot (south) and access roads to improve circulation, vehicle drop off and pedestrian connections.
- Improve parking efficiency by repaving the parking lot and providing parking lines.
- Potential to expand the overflow parking lot (west) into CP rail lands
- Potential to reconfigure or expand parking lots for additional vehicles
- Potential to ass bus parking west of arena

Trails and Pedestrian Access

- Potential to create a stronger and more permanent trail connection between the east edge of the site and the south parking lot.
- Potential to formalize and resurface small granular or informal trails throughout the site.
- Potential to create a more formalized entrance pathway from south access roads.

Landscaping

- Retain as many mature trees as possible.
- Add additional trees and landscaping to improve experience and add shade in key areas.

Maintenance Areas

- Retain, but possibly modify Zamboni snow dump area to add bus parking west of arena.

Signage and Wayfinding

- Potential to replace current mix of signage with a new cohesive wayfinding plan

Utilities and Servicing

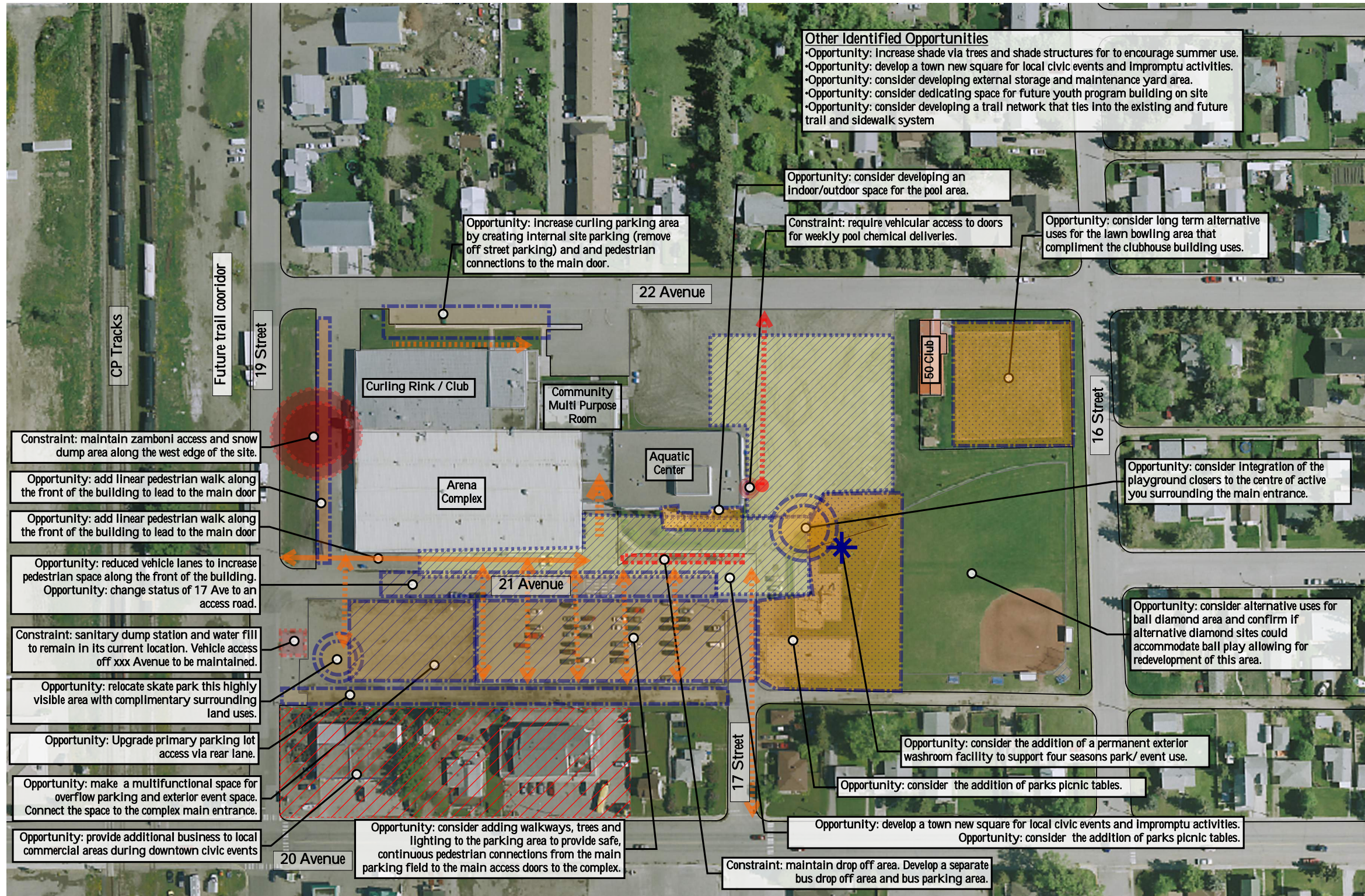
- Potential to add event servicing capability to utility boxes in key locations on- site.

Additional Recreation Activities

- Potential for small toboggan hill.
- Ensure site changes do not have adverse effects on sani-dump and water fill station







Other Identified Opportunities

- Opportunity: Increase shade via trees and shade structures for to encourage summer use.
- Opportunity: develop a town new square for local civic events and Impromptu activities.
- Opportunity: consider developing external storage and maintenance yard area.
- Opportunity: consider dedicating space for future youth program building on site
- Opportunity: consider developing a trail network that ties into the existing and future trail and sidewalk system

Opportunity: consider developing an indoor/outdoor space for the pool area.

Constraint: require vehicular access to doors for weekly pool chemical deliveries.

Opportunity: consider long term alternative uses for the lawn bowling area that compliment the clubhouse building uses.

Opportunity: increase curling parking area by creating internal site parking (remove off street parking) and and pedestrian connections to the main door.

Opportunity: consider integration of the playground closer to the centre of active you surrounding the main entrance.

Opportunity: consider alternative uses for ball diamond area and confirm if alternative diamond sites could accommodate ball play allowing for redevelopment of this area.

Opportunity: consider the addition of a permanent exterior washroom facility to support four seasons park/ event use.

Opportunity: consider the addition of parks picnic tables.

Opportunity: develop a town new square for local civic events and Impromptu activities.
Opportunity: consider the addition of parks picnic tables.

Constraint: maintain drop off area. Develop a separate bus drop off area and bus parking area.

Opportunity: consider adding walkways, trees and lighting to the parking area to provide safe, continuous pedestrian connections from the main parking field to the main access doors to the complex.

Constraint: maintain zamboni access and snow dump area along the west edge of the site.

Opportunity: add linear pedestrian walk along the front of the building to lead to the main door

Opportunity: add linear pedestrian walk along the front of the building to lead to the main door

Opportunity: reduced vehicle lanes to increase pedestrian space along the front of the building.
Opportunity: change status of 17 Ave to an access road.

Constraint: sanitary dump station and water fill to remain in its current location. Vehicle access off xxx Avenue to be maintained.

Opportunity: relocate skate park this highly visible area with complimentary surrounding land uses.

Opportunity: Upgrade primary parking lot access via rear lane.

Opportunity: make a multifunctional space for overflow parking and exterior event space. Connect the space to the complex main entrance.

Opportunity: provide additional business to local commercial areas during downtown civic events

J:\1470014701_Memorial_Complex_Outlying_Plan02_CADD\20_Drafting\14701_LA01.dwg



7909 - 51 Ave. Edmonton, AB T6E 5L9
P: 780.438.9000 F: 780.438.3700

Stamp/Seal

Revisions/Submissions	Submission Phase/Status
-	DESIGN DEVELOPMENT
-	
-	
-	
-	
-	
-	
-	
-	

Owner/Client
TOWN OF DIDSBURY
DIDSBURY, AB

Project
MEMORIAL PARK
DIDSBURY, AB

Drawing
OPPORTUNITY AND CONSTRAINTS PLAN

Scale
1:750
metric

Designer/Drawn
SEP/JS

Date
2016-05-12

Project No.
14701

Sheet
LA01



Appendix C: Programming Framework

Using the information gained during the Background Review and Analysis (see Section X for description of tasks) and the site opportunities and constraints (see section above), the project team worked with Town administration to develop a list of potential new and improved site programming and elements. The initial list of programming developed for the project included:

- Permanent public washroom or location for temporary washrooms
- Bus and/or vehicle drop off area
- Improved furnishing such as, benches, picnic tables, trash receptacles and bike racks, dog bag dispensers
- Event areas, including servicing
- Trails and sidewalks for access and recreation
- Gathering spaces for a range of group sizes and functions
- Improved wayfinding and signage
- Potential for public art locations
- Improved landscaping
- Picnic sites, including the possibility for bookable sites
- Removal of baseball diamond for better use of space
- Tennis / pickleball courts
- Beach volleyball
- Basketball
- Permanent skateboard park
- New/ upgraded playground, including the potential for nature/adventure play
- Winter ice for leisure skating or outdoor seasonal rink
- Amenities and activities for all season use, such as a group fire pit
- Improved / expanded outdoor fitness equipment
- Unique water play element, such as a wading pool, rather than a spray park
- Seniors activities as an extension of the 5-0 building use
- Community gardens and/or Japanese garden
- Lawn bowling/bocce
- Improved lighting on site (parking, trails, etc)

Appendix D: Concept Options Plans







Japanese Garden gateway



Japanese Garden planting and boulder elements



Full Court Basketball



Sand Volleyball Court



Tennis Court



Grouped Adult Exercise Equipment



Natural Play Space



Natural Play Space



Open Space / Picnic Areas



Special Event Group Fire Pit



Shelter for Smoking Area



Wading Pool



Paved Trails



Granular Trails



Skateboard Park



Patio Space



Adventure Play Senior Structure



Shelter



Leisure Skating



Adventure Play Climbing Components



Adventure Play Junior Structure



Patio Space



Shelter



Wading Pool



Japanese Garden planting and boulder elements



Japanese Garden gateway



Bocce Ball



Shelter



Shelter / Swing Benches



Tennis / Pickleball Court



Washroom / Storage Building



Trails / Picnic Areas



Adult Fitness Equipment Nodes



1/2 Court Basketball



Skate Park



Adventure Play Senior Structure



Open Space



Sand Volleyball Court



Leisure Outdoor Ice Rink



Leisure Skating Track



Adventure Play Junior Structure



Adventure Play Zip Line



Appendix E: Public / Stakeholder Engagement Results

During the creation of the outlying plan, the project team has engaged a wide range of expertise, opinions and perspectives. Through these interactions, there was a cross pollination of ideas and design decisions that helped form a clear understanding of project vision, goals and objectives. A collaborative approach between the consulting team, municipal administration, stakeholders and the general public provided the information and idea generation required to create an outlying plan that is unique to Didsbury. The Outlying Plan builds the extensive public consultation process and resulting recommendations provided in the 2013 Recreation and Culture Master Plan.

The following provides a list of representatives important to the creation of the redevelopment plan:

- **Town Departmental Representatives:** These representatives possess a solid working knowledge and understanding of municipal policies, key stakeholders, community values and trends, operational procedures and municipal budgets. Without this understanding, project decisions would not be aligned with the community's needs, operation challenges and financial realities.
- **Stakeholder Groups:** These groups are comprised of specific user groups, such as sports teams and interest groups, who have a vested interest and important knowledge about the site. These stakeholders have been specifically contacted for input during the project.
- **General Public:** This group is comprised of interested individuals or users of the site who were provided with opportunities through public consultation events and the Town's website to provide input and review and comment on the project.

The following sections provides details of specific feedback received from stakeholders and the public.

Sk8park Society

The town's Community Service team has engaged the Skate Club and toured various facilities in southern Alberta to gather preferred design elements for the skate park. The following provides the key feedback received from participants during the skate park tour:

- At the Airdrie park, they really liked the snake element, as well as some of the stairs and rails. There were boxes located at the base of the stairs ... they felt those were unnecessary. They would like to see a snake that ends in a small bowl.
- At the Shaw Millenium Park, they liked how different components were color-coded based on skill level. They liked a 360 pipe that was there, but recognize it wouldn't work in Didsbury.
- At the Calgary park, they really liked the flow of the park ... it wasn't rectangular, which they don't want. They again liked the stairs and rails, but the bowl system they did not like, as it only allowed for one rider at a time.

Things that we saw on our tour that they did not like:

- Okotoks park was very edgy with lots of starts and stops.
- Making sure if we were to have a bowl, that it has different depths. The one on 64th was very deep and a little to intimidating.
- In Airdrie there is a thing that looks like a plate, don't understand what that is for. (No thanks)

Things that they would like to see in a Didsbury skate park :

- Making sure that the park has really great flow so that all ramps, and obstacles flow nicely into each other, and you can keep your speed.
- We would really like to see a snake that then would work its way into a bowl. Making sure that there is some coping on the snake so it can act like a half pipe.
- A frame jump, stairs with a slanted wall beside, possibly different sets of stairs with different steps, grinds, roller's, and a nice drop in point.
- In Canmore they have put together a concrete tool
- Stand that had tools hard wired to it and a tire pump, so kids could fix and adjust their equipment
- We have seen in Canmore and BC, parks that have
- a very small section sometimes just on a pathway to the bigger skate park with learning ramps and grind rails. (smaller versions)

Ball Associations

Discussions with the local minor and adult ball associations confirmed that removal of the Jet's Ball diamond can occur without impact. Recent improvements at Memorial Park have minimized play at the Jet's Diamond. School use of the Jet's diamond will be shifted to Memorial Park.

Open House and Online Survey

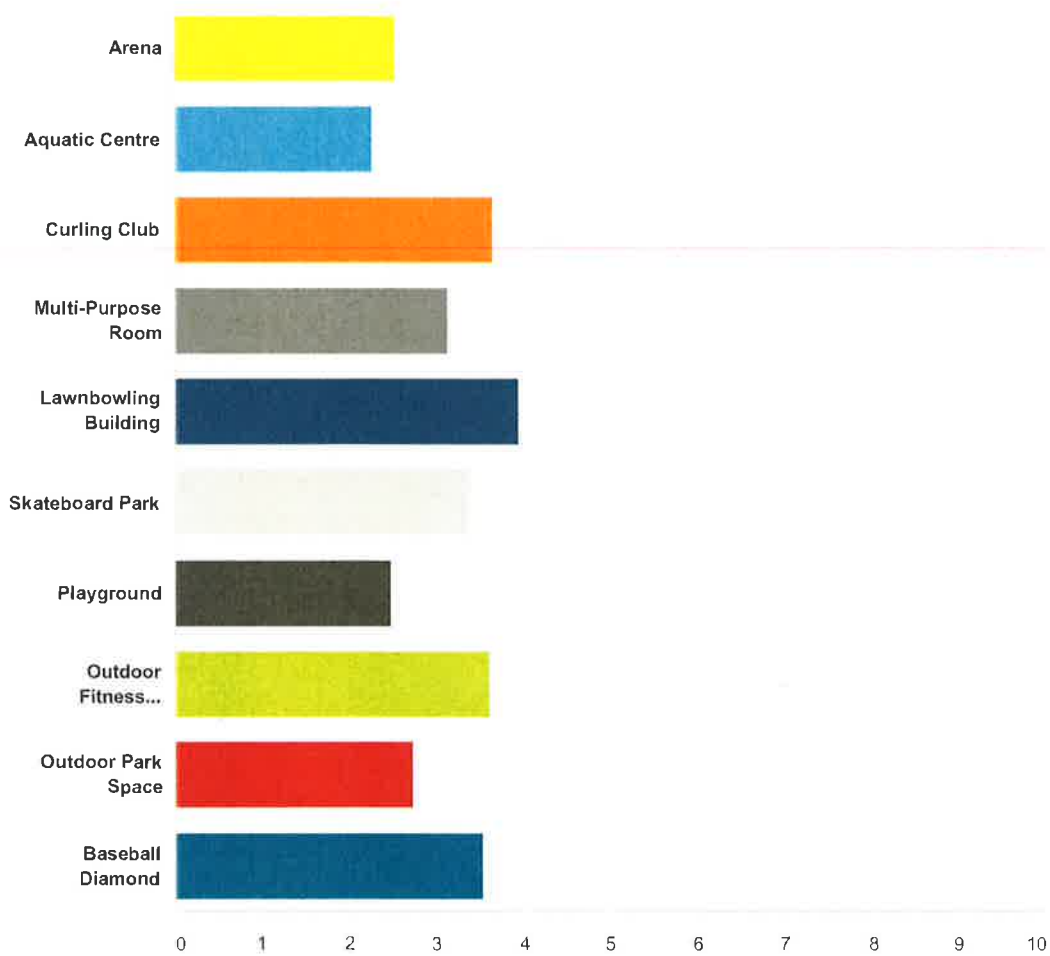
The open house provided generally positive feedback was provided on the concepts presented at the open house. Feedback was used to confirm direction for the final Outlying Plan. Public involvement included:

- Public Meeting / Online Survey
- presented high level concepts and gathered additional thought and ideas for the project
- Over 200 respondents
- 44 open house participants



Q1 Currently, how often do you or your family use the following amenities in this area during their intended season?

Answered: 212 Skipped: 8



	At least once a week	At least once a month	At least once a year	Never	Unsure	Total	Weighted Average
Arena	28.50% 59	15.46% 32	30.92% 64	23.67% 49	1.45% 3	207	2.54
Aquatic Centre	24.64% 52	37.44% 79	24.17% 51	12.80% 27	0.95% 2	211	2.28
Curling Club	2.39% 5	6.70% 14	17.22% 36	70.33% 147	3.35% 7	209	3.66
Multi-Purpose Room	4.35% 9	13.04% 27	54.11% 112	21.74% 45	6.76% 14	207	3.14
Lawnbowling Building	1.44% 3	1.92% 4	1.92% 4	89.90% 187	4.81% 10	208	3.95
Skateboard Park	10.05% 21	13.40% 28	9.09% 19	63.64% 133	3.83% 8	209	3.38
Playground	24.64% 52	29.38% 62	20.85% 44	23.22% 49	1.90% 4	211	2.48

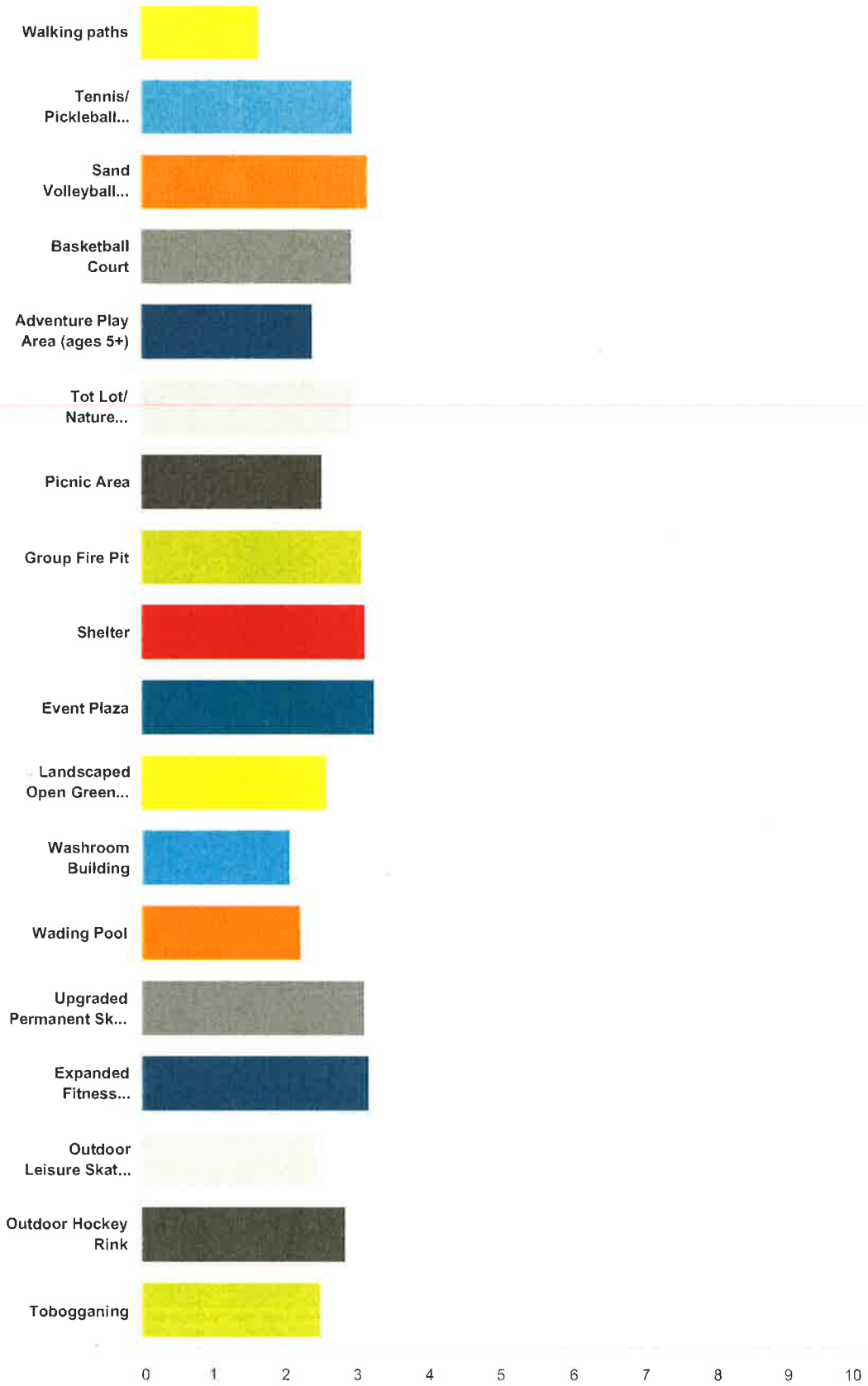
Didsbury Memorial Complex Outlying Plan

Outdoor Fitness Equipment	4.78% 10	7.66% 16	14.35% 30	66.99% 140	6.22% 13	209	3,62
Outdoor Park Space	23.33% 49	16.67% 35	25.71% 54	30.95% 65	3.33% 7	210	2,74
Baseball Diamond	7.62% 16	6.67% 14	14.76% 31	67.62% 142	3.33% 7	210	3.52

Q2 How often could you see yourself or your family using these amenities during their intended season?

Answered: 213 Skipped: 7

Didsbury Memorial Complex Outlying Plan



At lease once a week

At least once a month

At least once a year

Never

Unsure

Total

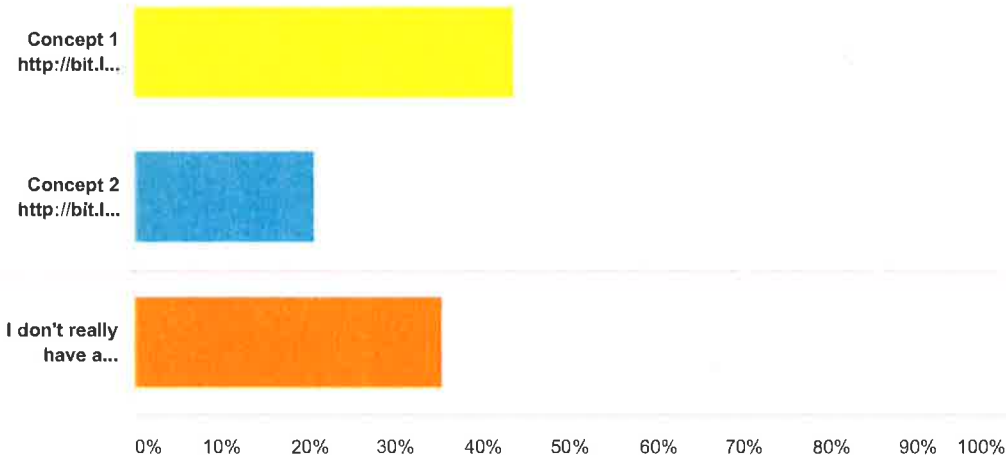
Weighted Average

Didsbury Memorial Complex Outlying Plan

Walking paths	58.49% 124	27.83% 59	7.08% 15	3.77% 8	2.83% 6	212	1.65
Tennis/ Pickleball Courts	12.80% 27	27.49% 58	18.48% 39	35.55% 75	5.69% 12	211	2.94
Sand Volleyball Court	9.09% 19	22.97% 48	18.18% 38	42.58% 89	7.18% 15	209	3.16
Basketball Court	16.27% 34	22.97% 48	19.14% 40	34.45% 72	7.18% 15	209	2.93
Adventure Play Area (ages 5+)	33.65% 70	27.88% 58	10.10% 21	23.56% 49	4.81% 10	208	2.38
Tot Lot/ Nature Playground (ages 18 months +)	25.96% 54	13.46% 28	9.62% 20	42.79% 89	8.17% 17	208	2.94
Picnic Area	16.67% 35	38.57% 81	27.62% 58	10.95% 23	6.19% 13	210	2.51
Group Fire Pit	7.18% 15	26.79% 56	27.27% 57	29.67% 62	9.09% 19	209	3.07
Shelter	8.25% 17	21.36% 44	33.50% 69	23.79% 49	13.11% 27	206	3.12
Event Plaza	5.83% 12	17.96% 37	41.75% 86	15.05% 31	19.42% 40	206	3.24
Landscaped Open Green Space	19.71% 41	31.73% 66	28.85% 60	11.54% 24	8.17% 17	208	2.57
Washroom Building	31.75% 67	43.13% 91	15.17% 32	6.16% 13	3.79% 8	211	2.07
Wading Pool	38.28% 80	26.79% 56	14.83% 31	15.31% 32	4.78% 10	209	2.22
Upgraded Permanent Skate Park	22.97% 48	13.88% 29	8.13% 17	41.15% 86	13.88% 29	209	3.09
Expanded Fitness Elements	12.98% 27	24.52% 51	9.62% 20	39.90% 83	12.98% 27	208	3.15
Outdoor Leisure Skating Area	23.92% 50	31.58% 66	22.49% 47	18.18% 38	3.83% 8	209	2.46
Outdoor Hockey Rink	23.08% 48	19.23% 40	18.75% 39	31.25% 65	7.69% 16	208	2.81
Tobogganing	25.84% 54	30.62% 64	20.57% 43	15.31% 32	7.66% 16	209	2.48

Q3 In general, which concept do you prefer?

Answered: 203 Skipped: 17



Answer Choices	Responses	
Concept 1 http://bit.ly/28RXqWg	43.84%	89
Concept 2 http://bit.ly/28XNRrR	20.69%	42
I don't really have a preference	35.47%	72
Total		203

Q4 What are some of the reasons for your preference?

Answered: 122 Skipped: 98

Parents Groups Area Needs Community Prefer Regularly
 Skateboard Park Unable Wading Pool
 Leisure Ice Court Kept Concept Option
 Skate
 Park Fitness Equipment Space
 Rink Activities Pit Family Zipline Looks Features
 Love Natural

#	Responses	Date
1	neither one works for my business as both concepts obstruct large vehicles from entering my business, and will directly affect whether my business stays operational in town or not. When proposals are drafted for development, consultation with business's in direct proximity should have direct verbal or written contact regarding this, I just got back from holidays and noticed the newspaper article regarding this and the deadline was today and feel in the dark about this all.	7/8/2016 6:48 PM
2	I don't see space for art creation anywhere in this, Our area has a large number of working artists and recreational artists. Sports seems to always take priority. I would like to see art space included in this.	7/8/2016 2:36 PM
3	everything is close together!	7/8/2016 2:30 PM
4	The modern shelters do not fit in with the historic look of didsbury, build on what is already existing, I like that there is some green area by there wading pool, not all cement or all green. Love the leisure skating track!	7/8/2016 11:47 AM
5	Looks busy	7/7/2016 8:35 PM
6	location of the skateboard park and basketball court, wading pool concept	7/7/2016 11:52 AM
7	I like the concept of the natural play space for the children in Concept 1.	7/6/2016 9:58 PM
8	Concept 2 takes up parking space - there is not enough there as it is when there are big events at the arena! I like the set up a lot better in Concept 1	7/6/2016 10:51 AM
9	There is more area for parking, which is what we REALLY need there. This area is NOT the right place for things that are easy vandalized, which has often been proven. It should ALL be parking & leave the ball diamond there. Neighbourhood Place needs to be in the downtown core and near other services.	7/6/2016 9:37 AM
10	I feel concept 2 would have more that people of our age would make use of	7/5/2016 11:44 AM
11	2 tennis courts are better then 1 1/2 basketball court better than a full wading pool and an ice skating pond could be combined	7/5/2016 11:38 AM
12	grouping of playgrounds together makes supervision easier skateboard centrally located adds to vibrancy of space	7/5/2016 11:26 AM
13	I am trusting the engineers on this, but I love the entire concept.	7/5/2016 11:20 AM
14	better layout for picnic tables, Japanese garden is a buffer for the parking, and I prefer the layout of the adventure playground	7/5/2016 11:15 AM

Didsbury Memorial Complex Outlying Plan

15	Placement of skatepark	7/5/2016 11:10 AM
16	I feel that Concept 2 would take away parking for the hockey season also concept 2 segregates your family too much and makes dumping a trailer worse	7/5/2016 11:08 AM
17	the wading pool and the skatepark	7/5/2016 11:03 AM
18	I like how in one space there is park and playing space and in another space there is other stuff instead of all spread out	7/5/2016 11:01 AM
19	I like how the park is not separate and it is easier for the family. It is bigger.	7/5/2016 10:57 AM
20	Helps families have a sense of community in Didsbury Everyone in one spot gathering. It is not as split apart or scattered	7/5/2016 10:42 AM
21	I would prefer to maintain lawn bowling but bocce ball is a potential good compromise has less maintenance, and is multi-generational. Bocce court is a better fit with the 50 club.	7/5/2016 10:22 AM
22	Need parking in front of rink	7/5/2016 10:18 AM
23	The full court basket ball	7/5/2016 10:02 AM
24	the 2 tennis courts picnic area have room for outdoor theatre or other expansion	7/5/2016 9:58 AM
25	I like that in concept 1 everything is located together unlike in concept 2 which is separated ie: the skatepark	7/5/2016 9:53 AM
26	lots of activities	7/5/2016 9:46 AM
27	The Town currently lacks these features in the community	7/5/2016 9:33 AM
28	Parents with children of multiple ages could keep an eye out for all ages if the skateboard park was closer to the other play spaces. Parking is more accessible on the south side.	7/5/2016 9:28 AM
29	Grandkid interests	7/5/2016 9:15 AM
30	I like how all physical activity concepts are put in one area so that there are many people (adults and kids) holding each other accountable) to respect the grounds.	7/5/2016 9:11 AM
31	Skateboard Park in the hub of activity - Parents can supervise all ages of family members also full basketball court	7/5/2016 9:03 AM
32	more space for lawn games	7/5/2016 8:55 AM
33	more space for lawn games	7/5/2016 8:54 AM
34	Young family	7/4/2016 10:38 PM
35	Concentrate on keeping green space and trees and natural area. Don't over do it, why so many things in one area? Are some one these features doubles as the old ones are falling apart? Ex. Tennis court? Enjoy too see newer park areas in town. What will happen to the old park stuff? Can we reduce reuse. recycle? What about moving the park to the ball diamonds?	7/4/2016 7:21 PM
36	Neither concept appeals to me as a whole. I like aspects of both, but even then combining the two would still leave something missing. I see a leisure ice in concept 1, but neither has an outdoor hockey rink, Would the basketball court be an outdoor rink as well? Further, the skate park in concept 1 is closer to the buildings & facilities which would allow for more supervision & access to washrooms, Placing the skate park near the sani-dump seems weird as it would be so far removed from the rest of the park. Also, it would take up the overflow parking, which gets used many times each season depending on the events in town. It can be used as a place for bigger vehicles to park. I like how one of the Bocce fields has been kept in concept 2. Though we play in our back yard, I have been to many cities that have communal Bocce areas that work great. I do not like the smoking shelter in concept 1 anywhere near the entrance. This area is already used, and is quite inconvenient for families to need to walk through to get to either the pool or the arena - unless the entrances are going to be changed?	7/4/2016 4:38 PM
37	We have a lot of teens in Didsbury and need some outdoor activities for them to do to get kids back outside.	7/4/2016 4:04 PM
38	I like the skateboard park near other amenities and not all by itself or just one other amenity.	7/4/2016 2:29 PM
39	I think that area needs a revamp and access to different things for kids and families to do	7/4/2016 11:59 AM
40	I would like to see the wading pool and playground equipment closer together so u can see your kids if they tend to separate to different areas. Nice to keep the skatepark a good distance away from park and wading pool.	7/4/2016 10:50 AM
41	More variety of options.	7/4/2016 8:48 AM

Didsbury Memorial Complex Outlying Plan

42	Perhaps when the town puts forward a plan for street repairs, tree replacements, weed control, and underground services upgrades I might have a preference. Until then, I couldn't care less about what the town does. This is nothing but fluff on a failing infrastructure. Getting really sick and tired of this town ignoring what it really needs. Good leadership and management.	7/4/2016 8:06 AM
43	Can't see it	7/4/2016 3:36 AM
44	The nature play structures are something we would use regularly.	7/4/2016 12:56 AM
45	Unable to open attachment	7/3/2016 7:08 PM
46	Neither design has an off-leash dog park. That would be something I would use regularly. I would also use walking paths and an outdoor leisure ice center.	7/3/2016 4:18 PM
47	not really sure just seems like it would have more to offer for everyone, then just specific groups.	7/3/2016 3:19 PM
48	I can't read it	7/3/2016 3:10 PM
49	The placement of the skateboard park.	7/3/2016 3:08 PM
50	Arrangement of new facilities. Good use of space. The skate park next to the sewage dump makes poor sense in the other one. I like that everything is together.	7/3/2016 2:44 PM
51	Just appealed to me more.	7/3/2016 2:24 PM
52	I would simply like a better space for glamorizes and kids to pay and have something to do. Especially a perminant skate park! Those kids need a place to go.	7/3/2016 2:07 PM
53	I like all the activity space in one area. Keeps kids out of traffic areas, unlike concept 2 which has the skatepark next to the sani-dump at the edge of the parking lot.	7/3/2016 12:34 PM
54	Seems better for our family with children, Layout and design looks better	7/3/2016 12:16 PM
55	I don't like the idea of my kids in the skate or basketball park in the middle of a parking lot. I do however like the idea of a bocce ball space. And I feel like it looks like there is better use of the land in the second option.	7/2/2016 7:36 PM
56	More usable for our family.	7/1/2016 10:29 AM
57	Looks a lot more moden	6/30/2016 2:53 PM
58	The skateboard park being closer to the rest of the amenities, not across the parking lot.	6/30/2016 8:11 AM
59	I can't really see all of the options clearly, can I see the concepts somewhere?	6/29/2016 1:21 PM
60	Comment when seen concept one was "wow, if all is that is there won't too many people be there!"	6/29/2016 7:33 AM
61	It looks more spacious/less crowded.	6/28/2016 11:44 PM
62	prefer the layout and size of concept 1 better.	6/28/2016 1:42 PM
63	Better over all concept.	6/28/2016 12:08 PM
64	Cannot see the concepts. Too small.	6/28/2016 7:52 AM
65	Couldn't open links	6/28/2016 7:08 AM
66	I like some of both	6/28/2016 6:40 AM
67	Like the more open area	6/27/2016 7:12 PM
68	I prefer it.	6/27/2016 5:30 PM
69	I like that everything is close together and away from the busier road near the train tracks. We like that the skatepark is a bigger size too.	6/27/2016 8:26 AM
70	Event space	6/26/2016 10:05 PM
71	Looks, great, love the drive in and parking and upgraded trees. Wading pool is so great, hopefully way better then the freezing cold spray parks. Think Riley park in Calgary. The playing courts are great and walking paths! It's too hard, concept one has everything full court full size. smokers pit, good parking, bus lane, But concept two feels cleaner and not so busy, nice skate park and basketball in corner, bigger wading pool and a park that goes over the path.	6/26/2016 9:53 PM
72	Couldn't see them.	6/26/2016 9:45 PM
73	Kid related	6/26/2016 9:35 PM
74	I like how everything is in one area and not split up also like the incorporation of nature and play	6/26/2016 9:35 PM

Didsbury Memorial Complex Outlying Plan

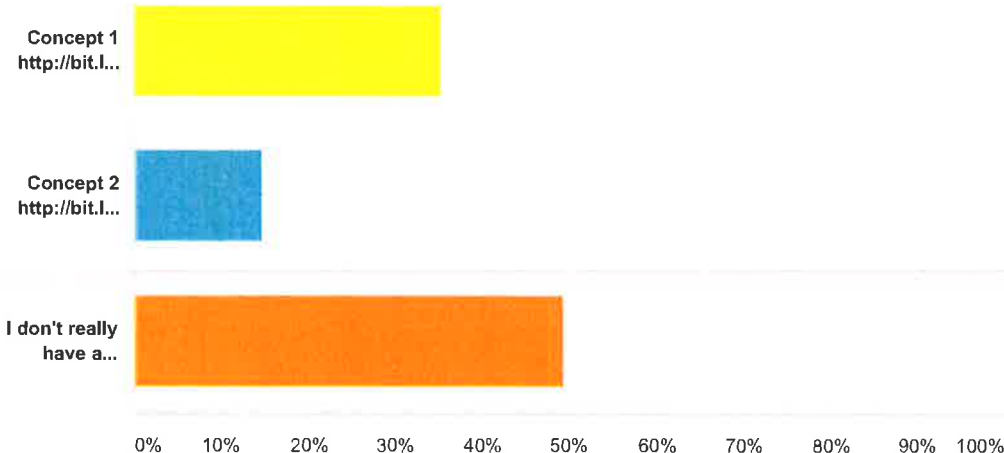
75	Skate park, basketball/ tennis courts.	6/26/2016 8:33 PM
76	very hard decision, great choice. Concept one, everything is together in an area. Closer for washrooms and children.	6/26/2016 8:28 PM
77	love the park area in former baseball diamond. Like the location of skatepark and Japanese garden	6/26/2016 8:17 PM
78	I like a lot of the ideas but a sand volleyball court seems destined for disrepair, broken glass, lack of use, and general eyesoreness.	6/26/2016 3:51 PM
79	I like the berm	6/26/2016 3:43 PM
80	A full basketball court, volleyball court and I like the layout better.	6/26/2016 1:00 PM
81	zipline, skatepark	6/26/2016 10:15 AM
82	Full basketball court, overflow parking	6/26/2016 9:18 AM
83	You never asked us what we wanted until after you drew up the plans.	6/25/2016 11:03 PM
84	It has more of my preferred activities I enjoy.	6/25/2016 10:18 PM
85	I think our tax money should be used to upgrade existing areas and better upkeep on things such as the dandelions that take over the green space behind our houses and therefore end up in my yard!	6/25/2016 8:47 PM
86	They are both great. 1 seems to have more green space	6/25/2016 8:02 PM
87	The North ball park is hardly ever used.....maybe this could spur some use.	6/25/2016 8:01 PM
88	Basketball takes up less space.	6/25/2016 7:32 PM
89	I like that the gravel pit turns into landscaped ares in-front of the arena	6/25/2016 4:34 PM
90	Looks very nice	6/25/2016 3:02 PM
91	the fitness equipment, though im unsure how that would work in our environment since summer is so short, will there be an indoor fitness area?	6/25/2016 11:19 AM
92	Better flow	6/25/2016 10:42 AM
93	Concept 2 would negativity effect the sani-dump. It's hard enough when it's busy to get your trailer turned around or into the dump. And kids at the skate park would be too far away and separated from the other activities. It would also effect the parking for the complex	6/25/2016 8:15 AM
94	Like the layout.a little better. Seems to be more picnic areas, and the park where the kids are is closer to the picnic areas for parents to keep a closer eye.	6/24/2016 9:24 PM
95	Layout is better and the emery aiming space is already provided at the park where Mountain View Rocks was held. (that should come back)	6/24/2016 8:45 PM
96	It would be sager for the kids to get to the basketball court if they didn't have to walk through the parking lot.	6/24/2016 7:52 PM
97	It includes everything that I would want to use, including the zipline.	6/24/2016 7:30 PM
98	The lawn bowling area needs to be incorporated. This is a traditional use that is unique and fits in well with greenspace concept.	6/24/2016 7:24 PM
99	All areas together. Utilizes space way more	6/24/2016 4:49 PM
100	I love them both, totally love the idea of any improvement	6/24/2016 4:43 PM
101	More activities	6/24/2016 4:28 PM
102	I'm sorry I couldn't open the link to see the preference	6/24/2016 4:22 PM
103	Children's play ground, wading pool, walking paths, Japanese gardens, outdoor skating would be most used. Splash park would also be desirable.	6/24/2016 4:17 PM
104	Full basketball court, location of skatepark and wading pool.	6/24/2016 4:12 PM
105	I strongly agree with the overflow parking lot for the few times it's really needed each year when all space is required. Also to place the tennis court in the corner out of the way makes great use of space as I don't feel bocce ball is very popular (like lawn bowling currently)	6/24/2016 4:03 PM
106	I would prefer to see all the activities kept together and all the parking kept together.	6/24/2016 3:48 PM
107	Na	6/24/2016 3:26 PM
108	I find the use of space better and the area flows together more	6/24/2016 3:21 PM

Didsbury Memorial Complex Outlying Plan

109	Location of all amenities within one area. As a parent, I would appreciate having my children in close proximity to each other and being able to enjoy activities that they would each enjoy.	6/24/2016 3:20 PM
110	The components are centrally located giving parents a better line of sight to children that may be using different at the same time.	6/24/2016 3:17 PM
111	position of permanent skate park,	6/24/2016 2:59 PM
112	Less parking lot space as what is already established is well enough for busy days.	6/24/2016 2:54 PM
113	I am unable to click these links and see them	6/24/2016 2:53 PM
114	Full court basketball. More parking. Better landscaping	6/24/2016 2:51 PM
115	Location of fitness equipment & events plaza	6/24/2016 2:00 PM
116	I really like option 2. I like the different activities for kids and the family to use. I really like the idea of a wading pool for tots and small children.	6/24/2016 1:51 PM
117	There is still room for overflow parking in the main parking area. The second concept has too much playground area for younger kids whereas the first has more room for all ages. The first concept has a full size basketball court which would be amazing as a lot of people often ask about where they can play basketball in the town and the only court is the small one by the schools. It also seems safer to have the skate park within the rest of the activity area rather than in the parking lot space. Overall the first design is more inclusive for all ages, rather than segregating the older kids from the younger ones with the positioning of age appropriate amenities. Also there is no safety risk with the skate park being away from the middle of the parking lot.	6/24/2016 1:42 PM
118	I like elements of both. Having the adult exercise equipment broken into groups along walking paths is a nice idea. Having a modern skatepark would be great as the one that is there is outdated and well used.	6/24/2016 11:26 AM
119	I like how the skateboard park is more to a "main" street vs tucked in the back. More visibility & I like the area in the NE for parking	6/24/2016 11:23 AM
120	I like having the skate park and basketball court in the same area as the rest of the outdoor facilities.	6/24/2016 10:11 AM
121	i like that its all together and there is more spots for parking since i can see with the wading pool and parks it will be hard for parking	6/24/2016 9:49 AM
122	Everything is kept in one area	6/24/2016 9:37 AM

Q5 Which parking and vehicle access arrangement do you prefer?

Answered: 208 Skipped: 12



Answer Choices	Responses	
Concept 1 http://bit.ly/28RXqWg	35.58%	74
Concept 2 http://bit.ly/28XNRrR	14.90%	31
I don't really have a preference	49.52%	103
Total		208

Q6 What are some of the reasons for your preference?

Answered: 31 Skipped: 139



#	Responses	Date
1	both have a negative impact on my business and therefore have no preference.. also the closed off area around the sani dump will affect the larger vehicles/trailers from getting in easily. as I already notice issues sometimes with these from my business	7/8/2016 6:48 PM
2	Parking is seperate from the activity area	7/8/2016 2:30 PM
3	traffic flow	7/7/2016 11:52 AM
4	see above	7/6/2016 10:51 AM
5	Many larger events fill up every available part of this lot as well as imposing on neighbours surrounding the complex. Think about the trade fair parking issues! If Didsbury continues to grow we will need MORE space at the complex and MORE parking! Both concepts are counterproductive for our expanding needs at the complex. Expansion of those facilities and of surrounding paved parking areas should be the focus instead.	7/6/2016 9:37 AM
6	We walk or bicycle to the arena most often	7/5/2016 11:44 AM
7	I think an unpaved overflow parking for large trucks overnight and rv's is necessary in our town	7/5/2016 11:26 AM
8	choose the one that provides the best access for delivery of services	7/5/2016 11:20 AM
9	makes most sense	7/5/2016 11:08 AM
10	more parking	7/5/2016 11:03 AM
11	It looks like more people would use it.	7/5/2016 11:01 AM
12	It looks bigger and has more space.	7/5/2016 10:57 AM
13	Because of the sani dump area mostly for the room for trailers and motorhomes to be able to pull thru easier. It is nicer to have overflow parking by sani dump area.	7/5/2016 10:42 AM
14	to keep overflow parking but leave the trees out so there is no tree maintenance	7/5/2016 9:58 AM
15	more efficient	7/5/2016 9:49 AM

Didsbury Memorial Complex Outlying Plan

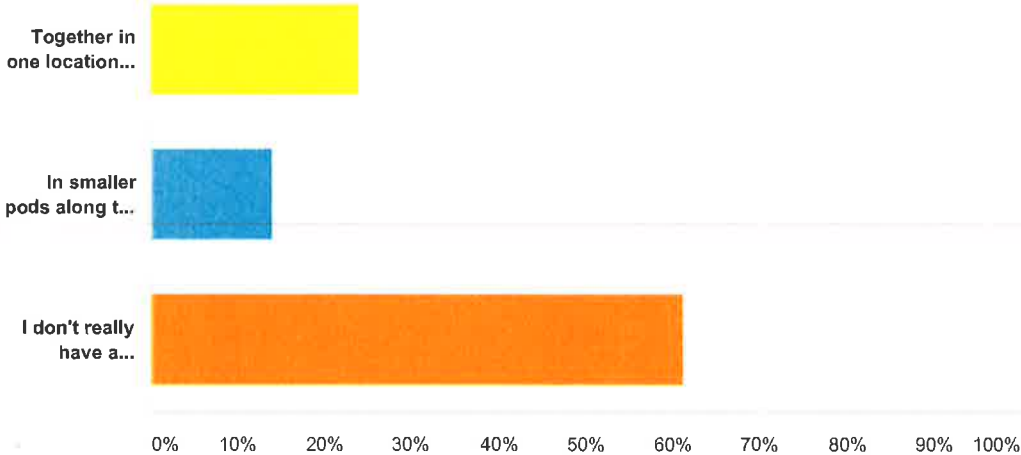
16	the flow of the parking	7/5/2016 9:46 AM
17	It doesn't appear to take away parking for winter activities	7/5/2016 9:33 AM
18	More parking on the south side. Pool and arena will still be heavy traffic draws.	7/5/2016 9:28 AM
19	easy access	7/5/2016 9:15 AM
20	overflow in a good place	7/5/2016 9:03 AM
21	close to the east building	7/5/2016 8:55 AM
22	close to the east building	7/5/2016 8:54 AM
23	More the better?	7/4/2016 7:21 PM
24	Keeping the overflow parking as is makes sense as the entrance to the arena and pool are still located on this side. During multipurpose events, the extra parking added in both concepts could work for the extra traffic. Also, this alternate entrance and parking may be nice only if there was a lobby in the new building to buffer winter weather. Also, the skate park should be closer to the rest of the park in my opinion, to make it part of the park. If one child is at the playground, and the other at the skate park, it is hard to watch both at the same time. Also, I would rather see a bocce field, and a basketball/ice rink/tennis court rather than beach volleyball & parking.	7/4/2016 4:38 PM
25	unless trees are put in concrete planters I am not a fan of them in parking area as they reduce parking space and potential for future issues with parking area because of roots	7/4/2016 11:59 AM
26	N/a	7/4/2016 8:48 AM
27	Can't see it	7/4/2016 3:36 AM
28	Unable to open attachment	7/3/2016 7:08 PM
29	I'm within walking distance of the current centre.	7/3/2016 4:18 PM
30	Don't have one	7/3/2016 3:19 PM
31	I can't see the links unfortunately	7/3/2016 3:10 PM
32	Working at the arena in the past years, people tend to park in overflow.	7/3/2016 3:08 PM
33	It makes the most sense for parking and visual appeal. The parking and facilities are to "spotty" in the other plan. It makes more sense to keep it together.	7/3/2016 2:44 PM
34	I like all the amenities together. That way when I'm there with my children I can sit in the middle and see them at any of the areas	7/3/2016 12:26 PM
35	Keeps the skate Park bad kids away from the small kids.	7/1/2016 10:29 AM
36	More spaces	6/30/2016 2:53 PM
37	more room to park in front of the building.	6/30/2016 8:11 AM
38	lots of parking in front	6/29/2016 7:33 AM
39	just from the looks of it, it keeps alot of parking and even seems to have more parking	6/29/2016 1:25 AM
40	Prefer Concept 1--seems to make the recreation area safer.	6/28/2016 1:42 PM
41	The town needs more positive things for the youth. Skate park is a must. It also needs to be a family oriented safe place	6/28/2016 1:06 PM
42	See above	6/28/2016 7:52 AM
43	Couldn't open links	6/28/2016 7:08 AM
44	More parking in the rear	6/27/2016 7:12 PM
45	The second idea takes away from this great idea....it really just looks like a parking lot plan otherwise.	6/27/2016 8:26 AM
46	More parking in the front of building main entrance. overflow area should just be made real parking. Bus parking is great.	6/26/2016 9:53 PM
47	Can't see options	6/26/2016 9:45 PM
48	..	6/26/2016 9:35 PM
49	Parking is kept together better in this one and not split between the rec areas	6/26/2016 9:35 PM

Didsbury Memorial Complex Outlying Plan

50	There never is enough parking, there are many events held here at the complex.	6/26/2016 8:28 PM
51	better access	6/26/2016 8:17 PM
52	I am not interested in a sand volleyball court, or having a zip line. However I do love the idea of a group fire pit area m, this would be wonderful for community members who are having family gatherings & need a space like this & could book it and rented out. I think it could be made even better by including a barbeque in that area. I think that this part of the concept one design should be added to the concept to design.	6/26/2016 4:20 PM
53	I seems to flow better	6/26/2016 3:43 PM
54	I feel like it's a just a better layout.	6/26/2016 1:00 PM
55	It seems easier and more accessible.	6/25/2016 10:18 PM
56	theres more of it	6/25/2016 4:34 PM
57	Good	6/25/2016 3:02 PM
58	looks to have enough parking, didsbury is small, i walk everywhere anyway	6/25/2016 11:19 AM
59	Both seem to have decreased parking with trees incorporated. It is imperative that space is not taken away for parking and/or parking is increased. Large events and/or busy seasons leave parking a problem currently.	6/25/2016 10:42 AM
60	Makes more sense	6/25/2016 8:15 AM
61	Better use of land	6/24/2016 8:45 PM
62	Overflow parking is important	6/24/2016 7:52 PM
63	I like the trees in the parking lot. Great idea!	6/24/2016 7:24 PM
64	Again any improvement	6/24/2016 4:43 PM
65	I would probably walk there.	6/24/2016 4:37 PM
66	Seems closer to buildings Better for handicapped	6/24/2016 4:36 PM
67	Stick with what we have, it's a good system	6/24/2016 4:28 PM
68	I'm sorry I couldn't open the link to choose what I prefer	6/24/2016 4:22 PM
69	No preference but have no issues with current parking	6/24/2016 4:17 PM
70	Less congestion north of buildings.	6/24/2016 4:12 PM
71	same as above	6/24/2016 3:48 PM
72	Na	6/24/2016 3:26 PM
73	I prefer to have a basketball court instead of additional parking locations	6/24/2016 3:21 PM
74	The pool and arena are very busy and require the extra parking out front of the building.	6/24/2016 3:20 PM
75	Prefer the accessibility in concept 1	6/24/2016 3:17 PM
76	Current parking adequate	6/24/2016 2:54 PM
77	I am unable to click the links and see them	6/24/2016 2:53 PM
78	More availability & spaces	6/24/2016 2:00 PM
79	The overflow parking in the front of the building is a better idea, as events for the arena, MPR, and pool all use the main front parking. Also, it leaves more activity space than the other concept. It allows for the skate park to be further away from moving vehicles in the parking lot, which is safer for its users.	6/24/2016 1:42 PM
80	They are both adequate :)	6/24/2016 11:26 AM
81	As I stated above, I think the basket ball & skateboard would be better situated "up front" vs tucked in the back	6/24/2016 11:23 AM

Q7 Would you be more likely to use the fitness equipment if it expanded and were located:

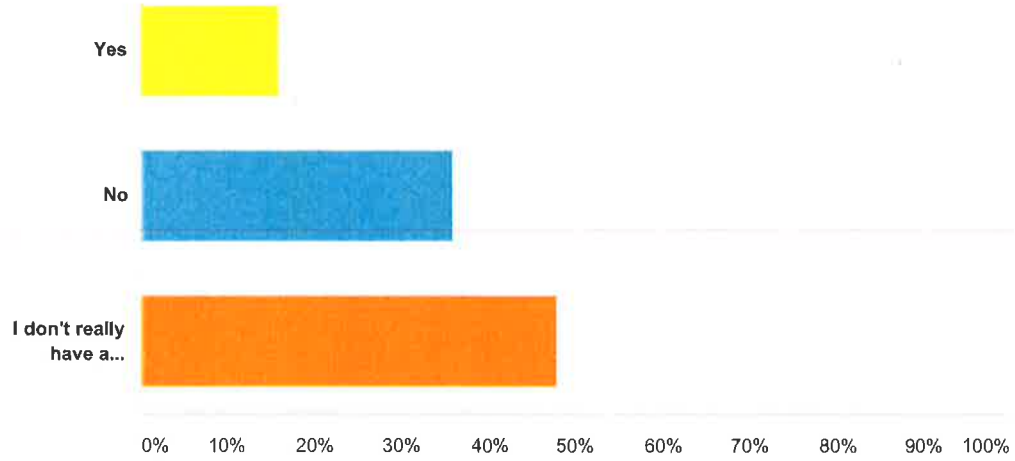
Answered: 210 Skipped: 10



Answer Choices	Responses
Together in one location for circuit training (Concept 1) http://bit.ly/28RXqWg	24.29% 51
In smaller pods along the pathway for cross-fitness training (Concept 2) http://bit.ly/28XNRrR	14.29% 30
I don't really have a preference	61.43% 129
Total	210

Q8 Would you be more likely to use the fitness equipment if it were located at Memorial Park instead?

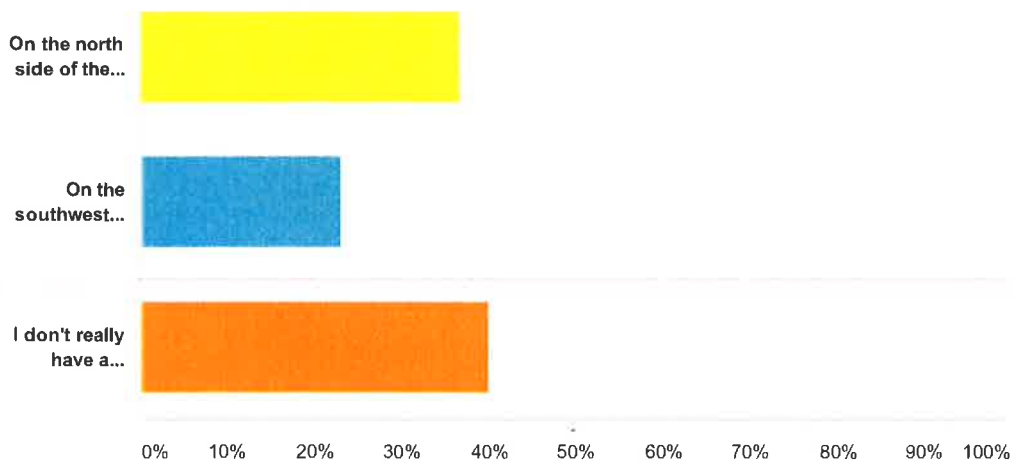
Answered: 212 Skipped: 8



Answer Choices	Responses	
Yes	16.04%	34
No	35.85%	76
I don't really have a preference	48.11%	102
Total		212

Q9 Do you prefer the permanent skatepark location:

Answered: 212 Skipped: 8



Answer Choices	Responses	
On the north side of the park, near other park activities (Concept 1) http://bit.ly/28RXqWg	36.79%	78
On the southwest corner of the park, away from other park activities (Concept 2) http://bit.ly/28XNRrR	23.11%	49
I don't really have a preference	40.09%	85
Total		212

Q10 What are some of the reasons for your preference?

Answered: 78 Skipped: 142

Family Traffic Supervision Space Think Look
 Skate
 Kids Younger Ones Park Safety
 Activities Nice Skateboard Closer

#	Responses	Date
1	the area proposed in concept 2 is not acceptable as why would you put a activity area beside a sani dump and have it smell all the time, plus with the children there the traffic in and out of the sani dump would pose a hazardous condition.	7/8/2016 6:48 PM
2	Close to all the other activities	7/8/2016 2:30 PM
3	Family's can be close together	7/8/2016 11:47 AM
4	noise and supervision issues	7/7/2016 11:52 AM
5	Didsbury's history with skateboard parks proves that it should NOT be close to residences. Our history also shows that the group that uses it does not always blend well with other age groups and interests. It should be highly visible and well away from other activities.	7/6/2016 9:37 AM
6	The skateboarders can be quite noisy and the age of the users tend to be teenagers it would be nice to have that not be right next to the playground	7/5/2016 11:42 AM
7	adds more vibrancy to the space and further from the road and parking equals safety	7/5/2016 11:26 AM
8	The feeling that kids are being segregated on concept 2 let them be a part of the community of park users.	7/5/2016 11:20 AM
9	Concept 2for skate park and basketball court separates your family too much	7/5/2016 11:08 AM
10	Because the skate park is with the othe park stuff	7/5/2016 11:01 AM
11	I rather the park in Concept 1 it doesn't look locked up	7/5/2016 10:57 AM
12	keep a good exciting large skatepark so the people will use it for excitement, so as not to get to cluttered or crowded.	7/5/2016 9:58 AM
13	If it is serarate people might not use it as much	7/5/2016 9:53 AM
14	Better if it is closer to everything else	7/5/2016 9:49 AM
15	more activities by the skatepark	7/5/2016 9:46 AM
16	It doesn't separate the park into two locations. Parents can stay neutral if many children attending the park. Supervision is key.	7/5/2016 9:33 AM
17	If separated out, the odds of suspicious activity are greater. Plus, see answer to # 3.	7/5/2016 9:28 AM
18	We like the skatepark in the middle of all the other activities to hold youth accountable to respect the grounds they will have lots of eyes on them.	7/5/2016 9:11 AM
19	Already mentioned.	7/4/2016 4:38 PM
20	Nice to have it in an area where you can go as a family and everyone can do something different at the same time.	7/4/2016 4:04 PM
21	just give the kids an area to enjoy and it should be able to be seen from road so drive by by police/parents can keep an eye on whats going on without having	7/4/2016 11:59 AM

Didsbury Memorial Complex Outlying Plan

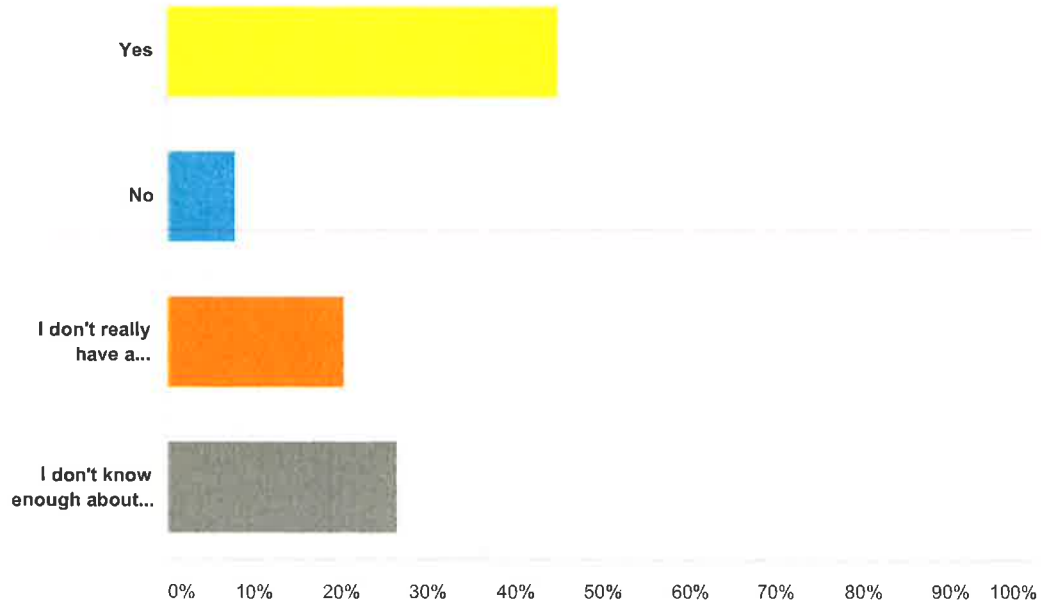
22	No preference	7/4/2016 8:48 AM
23	It would be farther away from little kids that probably shouldn't be playing at the skate park.	7/4/2016 8:41 AM
24	Little kids love to get into and run around in the skate park when they probably shouldn't. Having it farther away from other stuff may maintain a necessary separation.	7/4/2016 8:20 AM
25	We have 3 kids and one who would use the skate park a lot while we were using the playground, I'd prefer to be close together and be able to keep an eye on everyone. If the skate park is on the other side, away from everything, that won't be possible.	7/4/2016 12:56 AM
26	The skatepark needs to be the main point of the expansion. You need to get rid of the Japanese park and really expand the size of the skate park.	7/3/2016 3:08 PM
27	Having a skate park near the sewage dump is just gross, and insulting to those who use it. Having it closer to the facilities will allow for more observation by parents and is closer to the building so help is easier to get if needed.	7/3/2016 2:44 PM
28	So my older kids can skate while I watch the younger ones in the park. Like Airdrie's skate park.	7/3/2016 2:07 PM
29	Keeps all activities in one area, Easier for parents to supervise kids who may have different park interests/abilities. Worry about safety risks especially of kids are skating across the parking lot or inbetween parked vehicles.	7/3/2016 12:34 PM
30	We would use that the most and I like that my children can enjoy any of the activities while close together. Easier for me to see them all when its together	7/3/2016 12:26 PM
31	I would like to keep an eye on all my kids at the same time in different areas. I can't do that if they are so separated.	7/2/2016 7:36 PM
32	Some of the older guys using the skateboard parking swear or are obnoxious	7/1/2016 7:20 PM
33	Like I said before. It keeps the kids who use it away from the smaller kids. I won't let my kids go to the current one because the kids that go have horrible mouths.	7/1/2016 10:29 AM
34	Its centered	6/30/2016 2:53 PM
35	Would like to keep an eye on my big kids at the skatepark while playing with the younger ones on the playground.	6/30/2016 8:44 AM
36	So that parents with kids of varying ages and interests can keep an eye on all of their kids.	6/30/2016 8:11 AM
37	skate parks can tend to get a bit loud	6/29/2016 1:21 PM
38	Skate park should be by washrooms but then again kids are on skateboards or bikes they could skateboard over with their skateboards	6/29/2016 7:33 AM
39	n/a	6/28/2016 1:42 PM
40	I'd prefer teens that may be smoking or swearing are not near the playground but at the same time would like the skate park close so I can monitor my different aged children easily, as my youngest would want to be at the playground while my eldest may want to be at the skate park.	6/28/2016 8:28 AM
41	People are more willing to use spaces like that if they are other people.	6/28/2016 7:08 AM
42	I think keeping the age groups separate would be a good idea. When my son was younger he was offered pot by a few older kids hanging out near the skate park	6/28/2016 6:36 AM
43	I like the skatepark that would be the larger one that is away from the busier Ronald near the train tracks. I think that if placed there the kiddos that might be using the skatepark for other 'activities' other than what it's intended for would have more opportunity to. If the skatepark is closer to all the other amenities there will be a lot more people around that will hopefully discourage any untoward behaviours	6/27/2016 8:26 AM
44	..	6/26/2016 9:35 PM
45	In this design there is lowered risk of traffic flow issues and everything is kept in one area	6/26/2016 9:35 PM
46	Closer to washrooms and other activity	6/26/2016 8:28 PM
47	safety	6/26/2016 8:17 PM
48	I do not use it	6/26/2016 3:43 PM
49	For family's it makes more sense to be near the other park activities because they may have one kid who wants to go skateboard and another who wants to play on the playground. It's easy to keep your eye on everyone. I think more shenanigans could happen if it was more separate.	6/26/2016 1:00 PM
50	It looks better and easy to access from the main entrance.	6/25/2016 10:18 PM
51	Would never use	6/25/2016 8:02 PM

Didsbury Memorial Complex Outlying Plan

52	We don't skateboard. Have no need to have it near anything.	6/25/2016 7:32 PM
53	I wouldn't use it	6/25/2016 4:34 PM
54	I think	6/25/2016 3:02 PM
55	i think we need an all in one facility pool and fitness indoors since it often rains and snows, outdoor fitness is great but its a limited season	6/25/2016 11:19 AM
56	Will not use the skate park	6/25/2016 10:42 AM
57	Concept 2 would keep the kids at the skate park separate from the other activities	6/25/2016 8:15 AM
58	The skatepark can be dangerous for the smaller kids (under 7) and so if it is seperated a bit from the younger kids playing at the play center... And the noise of the skateboards and such.. Could be distracting..	6/24/2016 9:24 PM
59	Better land use.	6/24/2016 8:45 PM
60	N/a	6/24/2016 7:52 PM
61	Closer to downtown and far away from lawnbowling.	6/24/2016 7:24 PM
62	If the skate park is more central more people monitoring negative behaviour will not be an issue	6/24/2016 4:43 PM
63	Close=Watchable	6/24/2016 4:28 PM
64	Prefer skate park away from younger kids play area	6/24/2016 4:17 PM
65	Na	6/24/2016 3:26 PM
66	So My Oldest Can Skate While The Younger Ones Play nearby	6/24/2016 3:25 PM
67	Easier to supervise young users	6/24/2016 3:21 PM
68	More visibility for users, making it safer for everyone. Also it gives a feeling of inclusiveness to all users, no matter what activity you are participating in.	6/24/2016 3:20 PM
69	I think isolated skate parks provide a space or enable undesirable activity (ie. drugs, profanity, graffitti). Placing it nearby other family activity helps to curb certain behaviours	6/24/2016 3:17 PM
70	because it is close to every thing else. so it invites families to participate in a day together of various activities versus having to spread out to different locations	6/24/2016 2:59 PM
71	Looks more modern and would be a good look for the town.	6/24/2016 2:54 PM
72	I don't think it matters much where it's located	6/24/2016 2:53 PM
73	Isolation breeds bad behavior with no consequence. Teens are inherently good, but are still kids and need supervision. That supervision doesn't need to be 1:1. just having others nearby will maintain accountability.	6/24/2016 2:51 PM
74	Opens up more space in the South East area for the Events Plaza	6/24/2016 2:00 PM
75	It is more inclusive for older and younger kids using the entire area. As well as it is safer for the users of the skate park to be further away from moving vehicles in the parking lot.	6/24/2016 1:42 PM
76	Having the park next to the skatepark is a challenge as it is. There are frequently youth there swearing, smoking and smoking pot in front of the younger children.	6/24/2016 1:23 PM
77	Visual with passer bys vs. tucked in the back	6/24/2016 11:23 AM
78	I think its safer for the children so they are not going through the parking lot to get from one thing to another.	6/24/2016 10:11 AM

Q11 Do you support relocating Didsbury Neighborhood Place from its current downtown location to this area?

Answered: 215 Skipped: 5



Answer Choices	Responses	
Yes	45.12%	97
No	7.91%	17
I don't really have a preference	20.47%	44
I don't know enough about the services at Didsbury Neighborhood Place	26.51%	57
Total		215

Q12 Do you have any general comments about the existing area, or changes that you would like to see there?

Answered: 69 Skipped: 151

Activity Survey Complex Happen Walking Pay
 Facilities Safe Manner Community
 Existing Area Didsbury Future Park
 Budget Think Opportunity Town Fantastic Idea
 Nice Young People Concept Addition
 Wheelchair Accessible Important
 Fitness Equipment

#	Responses	Date
1	I'm all for the beautification of Didsbury, but we have to be aware with the limited commercial/industrial business in town and not to force any more out, as stated in the new strategic plans concerns	7/8/2016 6:48 PM
2	Please add space for painting, pottery or any visual art.	7/8/2016 2:36 PM
3	I would have liked a survey that gave general options, not a choice between two layouts.	7/8/2016 11:55 AM
4	it is important to keep it well maintained and clean!! Thrilled that something is being done....	7/8/2016 11:47 AM
5	Are the pathway paths meeting up to anything? Is this project in the budget? Can anything be reused, park playground or exercise equipment all ready there? When you rip out the old ball diamond with dug outs are dug outs going to be installed at the new ball diamonds? Or stands for spectators? Didsbury ball diamonds look half ass (sorry about the laungage) Is the new concept going to be done half ass? I havn't seen the tennis courts (by the golf course) or basketball court (by the old high school) are these areas clean and up too par? Do we not have an outdoor rink in the old high school location, valarosa and shantz? Good luck, we should all take a drive to carstairs and see how nice their town has come. I choose to live in didsbury five years ago. Make our town better!	7/7/2016 8:35 PM
6	Many larger events fill up every available part of this lot as well as imposing on neighbours surrounding the complex. Think about the trade fair parking issues! If Didsbury continues to grow we will need MORE space at the complex and MORE parking! Both concepts are counterproductive for our expanding needs at the complex. Expansion of those facilities and of surrounding paved parking areas should be the focus instead. Neighbourhood Place should be in the downtown core.	7/6/2016 9:37 AM
7	I love these ideas. Perhaps some good horseshoe pits facilities.	7/5/2016 11:42 AM
8	Changes add to the functionality and use of the space would be lovely but I do not feel that the location is accessible in a safe manner.	7/5/2016 11:26 AM
9	Skateboard park is too small. Lawn bowling is not utilized. Fitness equipment is not promoted. All of these proposed new changes will fix these.	7/5/2016 11:20 AM
10	All around dumb idea for the current skate park! it sucks	7/5/2016 10:57 AM
11	This new concept will be so great for the town!	7/5/2016 10:42 AM
12	I think our community could use more pathways and linked pathways. We are lacking in picnic areas. We would love to see a new outdoor full basketball court in Didsbury. Awesome!!!!	7/5/2016 10:02 AM

Didsbury Memorial Complex Outlying Plan

13	Make it wheelchair accessible. more monkey bars.	7/5/2016 9:42 AM
14	It's time for change. By doing this project it is beneficial for the community as a whole. Health and well being and attracting tourism.	7/5/2016 9:33 AM
15	Currently no wheelchair access to gain entry into park, Would love to see this change. Very poor equipment for young children (too high for them to get onto) Like the swings! Lots of parks don't have them.	7/5/2016 9:28 AM
16	Playground is not wheelchair accessible. The current skatepark is becoming a hazard and it is not big enough lots of space is being wasted.	7/5/2016 9:11 AM
17	I like the planned expanded activity hub being developed in this area	7/5/2016 9:03 AM
18	Pay the \$22,000 a year and keep a business building in town from being empty. Keep it in budget, neat, and the Japanese garden maybe a wonderful addition.	7/4/2016 7:21 PM
19	I would like to see in future the possibility of building a dirt-jump park rather than the skate park - not in the same location though, as they tend to be larger. A dirt jump park is more forgiving when falling, and also requires the riders to take more responsibility for the parks - like golfers in sand traps.	7/4/2016 4:38 PM
20	Definitely need an updated skatepark so we don't have to keep travelling to other communities. Want to keep supporting Didsbury	7/4/2016 4:04 PM
21	if your renting an area for didsbury neighborhood place then yes it should be moved to a town facility and i am sure the kids would enjoy using the park facilities	7/4/2016 11:59 AM
22	All areas should be wheelchair accessible and all staff of town should know how to use any wheelchair lifts or elevators. The pool also needs to have better changing facilities for adults with disabilities that incorporate a functioning lift transfer system and bench that is appropriate height, width and weight. All staff should be knowledgeable with these pieces of equipment as well. Keys for lifts should be available at all times	7/4/2016 7:37 AM
23	I like the idea of expanding this centre and providing outdoor facilities. There needs to be more for young people to do in the community. Some of us older ones could use more exercise too. :)	7/3/2016 4:18 PM
24	Your plan for the skatepark is too small. Increase its size. This is what will be used the most, you will regret it in years to come if you keep it this size.	7/3/2016 3:08 PM
25	More lighting in the park area on the east side. I live on that side of the park and it is very dark at night.	7/3/2016 2:44 PM
26	So excited about the future possibilities. Young people and families have needed an area like this for a long time. Well done Nicole Aasen!!	7/3/2016 12:34 PM
27	I really like the concept, Didsbury needs something like this to keep young families in town	7/3/2016 12:26 PM
28	Would love to see a Waterpark/ splash pad	7/3/2016 12:16 PM
29	I think it's exciting and I desperately hope you bring in the adventure Park for older kids. And tennis courts would be awesome	7/1/2016 10:29 AM
30	I dont think the money needs to be spent on the fitness equipment	6/30/2016 2:53 PM
31	Love natural playgrounds - fantastic idea!	6/30/2016 8:44 AM
32	We are in great need of a larger facility to host DNP and Parent Link as well as community meeting facilities	6/29/2016 2:28 PM
33	I think the existing area is fine, I have used it a lot in the past during home school events. I am looking forward to the new concepts, they sound amazing. I am a tennis player and our current courts are in terrible shape. The best court is now being used by the Golf Course.	6/29/2016 1:21 PM
34	From a seven year old The playground looks like old houses or witches houses. What will happen to the old playground? Can the waiting pool be bigger? Can we have the skating track? Zip line is so cool! Can the paths be wide enough that I can ride my bike beside someone and pass others without going single file? Japanese gardens look so pretty and cool!	6/29/2016 7:33 AM
35	Seeing the plans now I am fairly impressed when I moved here 8 years ago there was talk of a water park, seeing the wading pool I think that is a good compromise	6/29/2016 1:25 AM
36	Bigger skateboard park, Pickleball courts, water splash park	6/28/2016 9:57 PM
37	a less office/business environment	6/28/2016 1:42 PM
38	enhancing this area would be a great benefit to Didsbury.	6/28/2016 6:40 AM
39	The plans are amazing, but they are just that - a plan! I guess our family is very sceptical that such an exciting thing could actually happen here in Didsbury. Of late it seems that every exciting opportunity had not come to fruition.	6/27/2016 8:26 AM

Didsbury Memorial Complex Outlying Plan

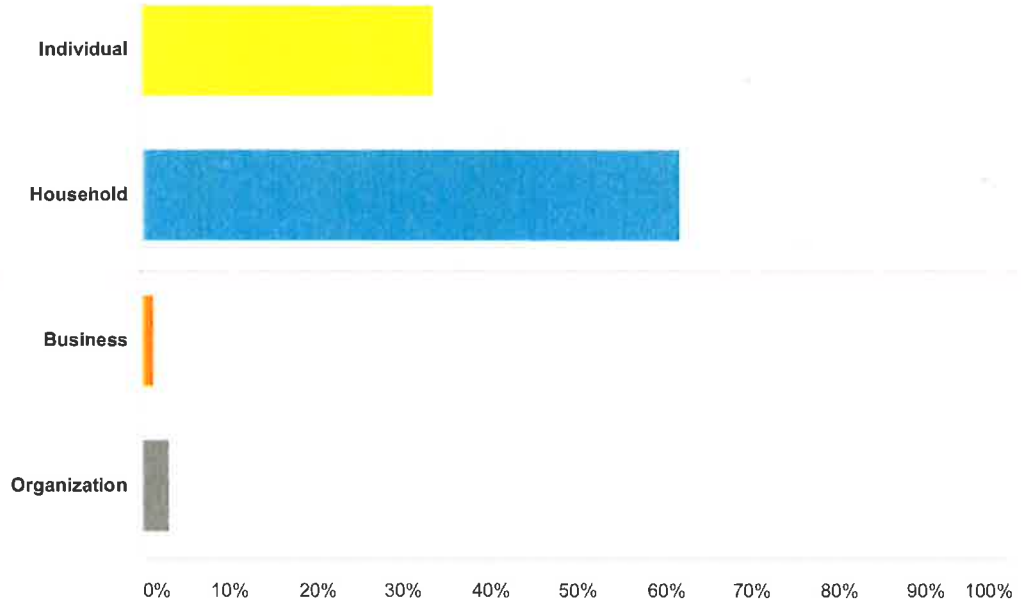
40	Looks wonderful. I would like a bigger wading pool and ditch the outdoor rink. This area will function very well. Please do a really nice job! Wading pool and washrooms are so great. Very excited to see this new project.	6/26/2016 9:53 PM
41	..	6/26/2016 9:35 PM
42	Please remember to keep enough parking especially with all the added activities. Love the wading pool, courts and skate park. Walking paths! Lots of trees and recycle bins	6/26/2016 8:28 PM
43	make walking to the area a priority..from streets so you can walk on a sidewalk all the way to the complex from neighbouring streets.	6/26/2016 8:17 PM
44	You're missing a very important question about the fitness equipment. Fitness equipment is wonderful, but we live in a climate where it is cold outside for almost 8 months out of the year. Having fitness equipment outside will make sure that it is only used for a very small portion of the year. It would be better to put it into the multipurpose building, where people could use it year-round. That would be a far better use of The equipment and the facility. I would also welcome the opportunity to buy a pass at an all around facility where I could do everything from working out to swimming to curling to hockey. I think this would be a better use of money spent on fitness equipment. I also would've liked to of seen more on this survey about trails within the community. Maybe I should expand and say sidewalks, as well. There are many parts of the community where there are no sidewalks in residential area, or even in front of the high school for that matter. For people who are out and about: strollers, walking or running trails & sidewalks offer safety, and the lack of these structures is a huge impediment to those who are moving about on foot or even by bike. One of the other places were a sidewalk is hugely needed is down the hill from Tim Hortons. There is a wonderful park right behind Didsbury Vet that is used by people running or strolling with their children or walking their dogs on the trails but absolutely no safe option for those people should they try to go down the hill in a safe manner. With the amount of the large semi's and trucks on that road you are always taking your life in your hands when you are on that hill. This is something that the community should look at. On the positive side I was very happy to see & use the new trail that was put in by the Bethany Health clinic, however I was very sad to see that it did not advance and cover the front of the high school.	6/26/2016 4:20 PM
45	I still see no sidewalk to the complex. it would be nice to be able to go to the complex and not have to walk on the road	6/26/2016 3:43 PM
46	In the wading pool area, it would be fun to make it into kind of a splash park/wading pool area! I also don't know if there should be that many trees in the parking lots as it may take away parking space. I would place the trees more around the parking lots than inside the parking lot.	6/26/2016 1:00 PM
47	Would love for them to have access to outside facilities for kids.	6/26/2016 9:18 AM
48	How about a splash park?	6/25/2016 8:02 PM
49	Outdoor hockey rink with boards! This would get used soooo much! Whatever is built, I want to see it properly maintained. Also, in my opinion, the outdoor fitness equipment is a waste of space. People don't use it, and changing it's location won't help that.	6/25/2016 7:32 PM
50	I think some open green space is nice, but would like to see the jets diamond remain. A splash park would be nice (unless I'm misreading the wading area?)	6/25/2016 10:42 AM
51	I think this community needs a central hub for families to hang. Right now everything is in separate areas so they are not used as much as the could be if they were centralized	6/25/2016 8:15 AM
52	Splash park would be great instead of wadding pool.	6/24/2016 10:52 PM
53	Would love to see more of a splash park in the wading pool area, for the kids in the summer.. Maybe a concession stand for the summer months.. Somewhere to sell refreshments and snacks.. Otherwise such a welcomed change to our community!! Great ideas!!	6/24/2016 9:24 PM
54	Glad to see change in the future	6/24/2016 8:45 PM
55	No	6/24/2016 7:52 PM
56	Every effort should be made to preserve existing trees. It makes no sense to cut down trees in order to plant trees,	6/24/2016 7:24 PM
57	I'd like to see a clear budget and specifically how it will affect our taxes.	6/24/2016 4:49 PM
58	I'm pretty excited to think something might be done. Good job Didsbury	6/24/2016 4:22 PM
59	Upgrades and added amenities would be great. We already pay very high taxes, would be nice to get more for what we pay. Long term up keep and maintainence is a concern though as many things are built and then not maintained, making them undesirable to use in years down the road.	6/24/2016 4:17 PM
60	I support the addition of trees and landscaping but hope that there aren't many parking spots sacrificed for it.	6/24/2016 4:03 PM
61	An off leash dog park in the green space / open space	6/24/2016 3:26 PM

Didsbury Memorial Complex Outlying Plan

62	Definitely Would Like Walking Paths	6/24/2016 3:25 PM
63	This is an amazing opportunity for our town ... don't wait!! Let's get working on it soon!	6/24/2016 3:20 PM
64	The necessity of a permanent lit skate park is huge. It gives people a place to practice their sport, it breeds community and healthy competition. By making a professional permanent park with various difficulties. It invites all skill levels or skateboards, bikes and scooters, I have seen many families at parks that are well done. At poorly located and constructed parks, those are the ones that become a place for shady activity.	6/24/2016 2:59 PM
65	Don't use the existing area enough due to lack of activities(personally)	6/24/2016 2:54 PM
66	We have some very lovely walkways on the town already, my family frequents them a couple times a week. And the most people we've ever encountered at any given time was 7. I don't think that amount of traffic would demand more pathways. At the same time we also frequent the arena, the aquatic center and the parks (skate/and play) and I have never seen (not even once) someone use the exercise equipment, but there are alays kids using the parks! Stop investing in useless landscaping. Start investing in the kids growing up here. Give them a safe place to frequent, bigger skate park, boys and girls club... from a business stand point it is actually absurd to even consider the walkways/exercise equipment/toddler park... or anything else that this small community already has that doesn't get used.	6/24/2016 2:53 PM
67	Expansion & improvement to entice more users & compete with neighboring communities	6/24/2016 2:00 PM
68	Looks nice	6/24/2016 11:23 AM
69	I think having Didsbury Neighborhood Place over by the complex is a fantastic idea!	6/24/2016 10:11 AM

Q13 From what perspective are you completing this survey?

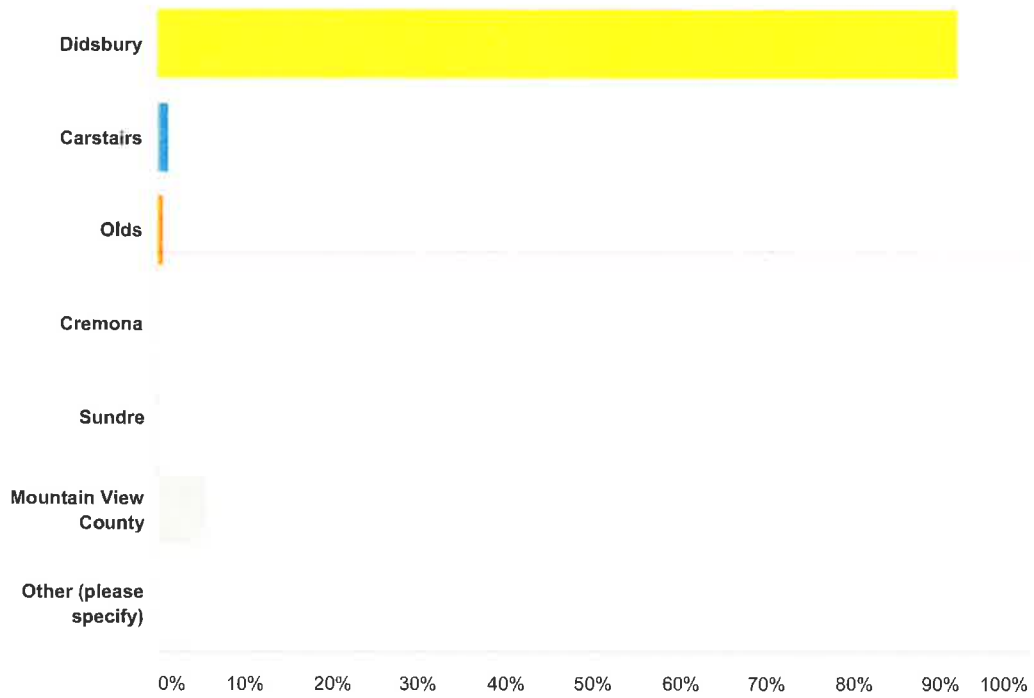
Answered: 217 Skipped: 3



Answer Choices	Responses	
Individual	33.64%	73
Household	61.75%	134
Business	1.38%	3
Organization	3.23%	7
Total		217

Q14 If you answered "individual" or "household" in the previous question, which community do you live in?

Answered: 216 Skipped: 4



Answer Choices	Responses	
Didsbury	92.13%	199
Carstairs	1.39%	3
Olds	0.93%	2
Cremona	0.00%	0
Sundre	0.00%	0
Mountain View County	5.56%	12
Other (please specify)	0.00%	0
Total		216